

Toward an Effective Risk-Conscious and Collaborative Vehicular Collision Avoidance System

Tarik Taleb, *Member, IEEE*, Abderrahim Benslimane, *Senior Member, IEEE*, and Khaled Ben Letaief, *Fellow, IEEE*

Abstract—In this paper, we introduce a cooperative collision-avoidance (CCA) scheme for intelligent transport systems. Unlike contemporary strategies, the envisioned scheme avoids flooding the considered vehicular network with high volumes of emergency messages upon accidental events. We present a cluster-based organization of the target vehicles. The cluster is based upon several criteria, which define the movement of the vehicles, namely, the directional bearing and relative velocity of each vehicle, as well as the intervehicular distance. We also design a risk-aware medium-access control (MAC) protocol to increase the responsiveness of the proposed CCA scheme. According to the order of each vehicle in its corresponding cluster, an emergency level is associated with the vehicle that signifies the risk of encountering a potential emergency scenario. To swiftly circulate the emergency notifications to collocated vehicles to mitigate the risk of chain collisions, the medium-access delay of each vehicle is set as a function of its emergency level. Due to its twofold contributions, i.e., the cluster-based and risk-conscious approaches, our adopted strategy is referred to as the cluster-based risk-aware CCA (C-RACCA) scheme. The performance of the C-RACCA system is verified through mathematical analyses and computer simulations, whose results clearly verify its effectiveness in mitigating collision risks of the vehicles arising from accidental hazards.

Index Terms—Cooperative collision avoidance (CCA), intervehicle communication (IVC), vehicular ad-hoc network (VANET).

I. INTRODUCTION

ALONG with the ongoing advances in dedicated short-range communication (DSRC) and wireless technologies, intervehicular communication (IVC) and road-vehicle communication (RVC) have become possible, giving birth to a new network-type called vehicular ad-hoc network (VANET). The key role that VANETs can play in the realization of intelligent transport systems has attracted the attention of major car manufacturers (e.g., Toyota, BMW, and Daimler-Chrysler). A number of important projects have been subsequently launched. Crash Avoidance Metrics Partnership (CAMP), Chauffeur in Europe Union, CarTALK2000, FleetNet, and DEMO 2000 by the Japan Automobile Research Institute (JSK) are a few notable examples.

Manuscript received May 4, 2009; revised September 16, 2009 and December 23, 2009. The review of this paper was coordinated by Prof. H. Hassanein.

T. Taleb is with NEC Europe Ltd., 69115 Heidelberg, Germany (e-mail: talebtarik@ieee.org).

A. Benslimane is with the University of Avignon, 84029 Avignon, France (e-mail: abderrahim.benslimane@univ-avignon.fr).

K. B. Letaief is with the Hong Kong University of Science and Technology, Kowloon, Hong Kong (e-mail: eekhaled@ece.ust.hk).

Color versions of one or more of the figures in this paper are available online at <http://ieeexplore.ieee.org>.

Digital Object Identifier 10.1109/TVT.2010.2040639

VANETs can be used for a plethora of applications, ranging from comfort and infotainment applications to onboard active safety applications. The latter are the most attractive and promising ones. Such applications assist drivers in avoiding collisions. They coordinate among vehicles at critical points such as intersections and highway entries.¹ Via an intelligent dissemination of road information (e.g., real-time traffic congestion, high-speed tolling, or surface condition) to vehicles in the vicinity of the subjected sites, collisions among vehicles can be prevented, and on-road vehicular safety can be accordingly enhanced.

To facilitate safety applications in VANETs, intraplatoon cooperative collision-avoidance (CCA) techniques have significantly evolved recently. With CCA systems, the number of car accidents and the associated damage can be significantly reduced. The prime reason for deploying CCA systems in VANETs is the substantially long reaction time (i.e., 0.75–1.5 s [2]) of any human driver to apply the brake following an emergency scenario. The potential damage inflicted by such a long reaction time of an individual driver is, indeed, remarkably high in case of a close formation of vehicles, which travel at high speeds. Instead of having drivers to traditionally react to the brake lights of vehicles immediately ahead, CCA systems enable vehicles to promptly react in emergency situations via a fast dissemination of warning messages to the vehicles in the platoon. However, the effectiveness of a given CCA system depends not only on the reliability of the circulated warning messages but on the specific nature of the emergency situation at hand as well. To this end, the underlying medium-access control (MAC) protocols of the concerned VANET need to make sure that the medium-access delay associated with each vehicle, under an emergency event, remains as short as possible. Driven by this need, we envision an effective CCA scheme, which takes into account a risk-aware MAC protocol, which we have specifically tailored for VANET environments. Furthermore, we envision clusters of vehicles based on their movement traits, including directional headings and relative velocities, and on the intervehicular distances as well. In a given cluster, each vehicle is assigned an emergency level, which reflects the risk associated with that particular vehicle to fall into an accidental hazard, e.g., collision with the other cars in the platoon. This cluster-based approach also permits us to set the medium-access delay of an individual vehicle as a function of its emergency level. By so doing, the envisioned strategy attempts to provide the drivers of the vehicles with warning messages pertaining to the emergency scenario with

¹An abridged version of this work has appeared in [1].

89 the shortest delivery latencies possible. This feature should
 90 prevent chain collisions or reduce the associated damage. Our
 91 adopted strategy is referred to as the cluster-based risk-aware
 92 CCA (C-RACCA) scheme due to its twofold contributions,
 93 namely, the formation of clusters and the adoption of the risk-
 94 conscious medium-access protocol.

95 The remainder of this paper is organized as follows. Rel-
 96 evant research on MAC protocols in VANET environments
 97 is presented in Section II. The operations of the envisioned
 98 C-RACCA system comprising its clustering mechanism and the
 99 risk-aware MAC protocol are delineated in detail in Section III.
 100 The performance of the C-RACCA system is evaluated in
 101 Section IV, which justifies the simulation setup and provides an
 102 in-depth analysis of the simulation results. Concluding remarks
 103 follow in Section V.

104

II. RELATED WORK

105 VANETs are well characterized for their rapidly and dynam-
 106 ically changing topologies due to the fast motion of vehicles.
 107 Unlike traditional mobile ad hoc networks (MANETs), the
 108 nodes' mobility in VANETs is constrained by predefined roads
 109 and restricted speed limits. Additionally, nodes in VANETs can
 110 be equipped with devices with potentially longer transmission
 111 ranges, rechargeable source of energy, and extensive on-board
 112 storage capacities. Processing power and storage efficiency are,
 113 thus, not the issue in VANETs that they are in MANETs.

114 The work by Little and Agarwal [3] serves as an inspiring one
 115 for utilizing clusters of vehicles in VANETs without the use of
 116 fixed infrastructures (e.g., access points, satellites, and so forth).
 117 The hypothesis of this work states that the vehicles, which travel
 118 along the same directed pathway, can form interconnected
 119 blocks of vehicles. Thus, the notion of cluster of vehicles is
 120 adopted whereby a header and a trailer identify a particular
 121 cluster that is on the move. Little and Agarwal used multihop
 122 routing in these blocks or clusters of vehicles to obtain an opti-
 123 mum propagation rate to disseminate information pertaining to
 124 traffic and road conditions. For this purpose, they characterized
 125 the bounds of information propagation under different traffic
 126 patterns. In addition, by combining delay-tolerant networking
 127 and MANET techniques, they also implemented the safety
 128 information dissemination algorithm as a routing protocol.

129 To inform all the vehicles in a risk area (along a highway)
 130 regarding an emergency scenario (e.g., an accident or an im-
 131 pediment on the road) via alarm broadcasts, a novel com-
 132 munications technique called the intervehicles geocast (IVG)
 133 protocol was proposed [4]. IVG considers a vehicle to be in
 134 the risk area if the accident/obstacle is in front of that vehicle.
 135 Based on the temporal and dynamic attributes of the locations,
 136 speeds (i.e., highway), and driving directions of the vehicles in
 137 the risk zone, IVG defines multicast groups of these vehicles.
 138 Since IVG does not maintain neighboring cars' list at each
 139 vehicle, the overall signaling overhead is reduced, which saves
 140 precious bandwidth to disseminate the actual warning messages
 141 according to a defer time algorithm. In addition, relays are
 142 deployed dynamically in a distributed manner (in each driving
 143 direction) that rebroadcasts the warning messages to ensure
 144 their delivery to the vehicles in the risk area.

The broadcast storm problem, in which there is a high level of
 contention and collisions at the MAC level due to an excessive
 number of broadcast packets, is presented in the VANET con-
 text in [5]. The serious nature of the broadcast storm problem
 is illustrated in a case study of four-lane highway scenario.
 This work proposes three lightweight broadcast techniques to
 mitigate the broadcast storms by reducing redundant broadcasts
 and packet loss ratio on a well-connected vehicular network.
 This work, however, does not consider addressing the broadcast
 storm issue at the MAC layer (i.e., the real source of the
 problem), which may be able to mitigate the problem more
 effectively.

To prevent accidents that may occur due to late detection of
 distant/roadway obstacles, Gallagher *et al.* [6] emphasized the
 need for longer range vehicular safety systems that are capable
 of real-time emergency detection. To this end, they investigated
 the applicability of DSRC resources to improve the efficiency
 and reliability of vehicle safety communications. This work
 specifically partitions crucial safety messages and the nonsafety
 ones. The former is termed as "safety-of-life" messages, which
 are assigned the highest priority and transmitted on a dedi-
 cated safety channel. The underlying MAC and physical (PHY)
 layers, guided by the higher layers, enable the awareness and
 separation of safety and nonsafety messages.

In the survey conducted by Hartenstein and Laberteaux [7],
 the parameters that may influence the probability of packet
 reception in VANETs have been pointed out, including ve-
 hicular traffic density, radio channel conditions, transmission
 power, transmission rate, contention window sizes, and the
 prioritization of packets. This work also mentions that for
 packets prioritization in particular, the enhanced distributed
 channel access (EDCA), which is also part of 802.11-2007
 specifications, can be used. Four distinct access categories, each
 with its own channel access queue, are provided in this scheme,
 whereby the interframe space and the contention window size
 can be tailored to the specific needs of the target VANET.
 Indeed, Torrent-Moreno [8] demonstrates that, in contrast with
 the simple carrier sense multiple access (CSMA) scheme, the
 channel access time and probability of packets reception im-
 prove to an extent under EDCA scheme, even in the case of a
 saturated channel.

Sichititu and Kihl [9] survey IVC systems and focus on
 public safety applications toward avoiding accidents and loss
 of lives of the passengers. Their study points out that safety ap-
 plications are inherently delay sensitive, e.g., vehicular warning
 systems to avoid side crashes of cars and trains at crossroads,
 deploying safety equipments such as inflating air bags and
 tightening seat belts, and so forth. The system penetration of
 such applications is, however, subject to determining the zone
 of relevance as accurately as possible. For instance, when an
 accident in the right lane of a highway occurs, it is considered
 in the covered studies to only affect vehicles approaching the
 accident from behind. The survey also describes the available
 communication technologies, focusing on their PHY and MAC
 layers, that may facilitate vehicular communications to dissem-
 inate emergency messages. The studied protocols that are con-
 sidered to be suited for intervehicle emergency communications
 systems include IEEE 802.11 and its DSRC standard, Bluetooth

203 (standardized within IEEE 802.15.1), and cellular models such
 204 as the global system for mobile communications/general packet
 205 radio service and third-generation (3G) systems like the uni-
 206 versal mobile telecommunications system (UMTS), the UMTS
 207 terrestrial radio access network, and so on.

208 Toor *et al.* [10] suggest that three difficulties arise in the
 209 PHY/MAC layer in VANETs. The first problem involves shar-
 210 ing the radio medium to effect robust transmission among
 211 the vehicles. The second problem consists of traffic jams or
 212 postaccidental scenarios whereby the target VANET exhibits
 213 a rather high density of vehicular nodes. The third and most
 214 significant problem identified in this work is the support of
 215 adequate emergency applications to guarantee quality of service
 216 (QoS) in wireless environments. The study elucidates that there
 217 exist two main approaches for sharing the medium that may
 218 be used for vehicular communications, namely 1) the CSMA-
 219 like random scheme and 2) the time-division multiple-access
 220 (TDMA)-like controlled scheme. A prime example of the
 221 former approach is IEEE 802.11, which is stated to be the
 222 most dominant MAC protocol for developing safety applica-
 223 tions for vehicular networks. As examples of the latter, the
 224 study refers to a number of other technologies derived from
 225 3G telecommunications systems based upon variations of the
 226 pure ALOHA protocol [11] such as the slotted ALOHA [12]
 227 and reliable reservation ALOHA (RR-ALOHA) [13] access
 228 schemes. Recent works such as [14] have also considered QoS
 229 issues in VANETs.

230 As stated earlier, a class of unique applications has been
 231 devised for VANETs. For each application, different tech-
 232 niques have been proposed. From the observation that routing
 233 protocols originally designed for MANET networks may be
 234 suitable only for delay-tolerant content-delivery applications
 235 (e.g., in-vehicle Internet) [15], the work in [17] proposed a
 236 set of context-aware broadcast-oriented forwarding protocols
 237 for delay-sensitive safety applications in VANETs (e.g., CCA
 238 systems). The packet-forwarding operation can be selective
 239 and based on the geographical locations and the moving di-
 240 rections of the source and the destination vehicles and the
 241 packet's information content. Furthermore, mobility-oriented
 242 schemes such as "Mobility-centric approach for Data Dissem-
 243 ination in Vehicular networks" (MDDV) [23], which attempts
 244 to address the data delivery problem in a partitioned and
 245 highly mobile VANET topology, integrates the following three
 246 data-forwarding techniques: 1) the opportunistic-based scheme;
 247 2) the trajectory-based scheme; and 3) the geographical for-
 248 warding scheme. The former refers to the fact that vehicle
 249 movements create the opportunity to pass messages and de-
 250 termine which vehicle to transmit/buffer/drop a message and
 251 when. The trajectory forwarding implies that the information
 252 is being propagated from the source to the destination. The
 253 geographical forwarding, on the other hand, means that the
 254 message is conveyed geographically closer to the destination
 255 along the source-to-destination trajectory. Localized algorithms
 256 specifically designed for vehicles are developed to exploit
 257 these data-forwarding schemes. By allowing multiple vehi-
 258 cles to actively propagate a given message, MDDV improves
 259 message-delivery reliability. While the aforementioned packet-
 260 forwarding protocols can reduce the number of signaling mes-

sages in a VANET, ensuring prompt delivery of critical warning
 261 messages is also crucial for CCA systems. For this purpose, 262
 there is a need to develop adequate MAC protocols. 263

264 Many of the MAC protocols that have evolved over the years
 265 are, however, not applicable to VANET environments. Among 265
 the contemporary MAC protocols, the IEEE 802.11 MAC spec- 266
 267 ification is considered to be the leading choice among VANET
 268 designers as a means to provide safety applications [25]. The 268
 MAC protocol of IEEE 802.11 consists of a number of so- 269
 270 phisticated mechanisms that rely on soft handshaking involving
 271 a number of signaling messages (e.g., request-to-send and
 272 clear-to-send messages) exchanged between the sender and the
 273 receiver. These mechanisms include the following: 1) CSMA 273
 with collision avoidance (CSMA/CA); 2) multiple access with 274
 collision avoidance (MACA); and 3) MACA for wireless with 275
 distributed coordinated function mode. More tailored MAC 276
 protocols for VANET environments are also evolving, as shown 277
 in the study conducted by Adachi *et al.* [16]. In addition, 278
 the following two techniques have evolved into safety-critical 279
 application domains such as CCA: 1) data prioritization [17], 280
 [26] and 2) vehicle prioritization. We focus on the latter in 281
 this paper whereby the emergency level associated with each 282
 vehicle in the considered VANET is taken into account to 283
 prioritize the vehicle. Intuitively, vehicles with high emergency 284
 levels should be always granted prompt access to the medium. 285

286 Provisioning security for protecting the vehicular positions in
 a VANET is also emerging as an active area of research. For ex- 287
 ample, Yan *et al.* [28] presented a novel approach that employs 288
 an on-board radar at each vehicle to detect neighboring vehicles 289
 and to confirm their announced coordinates. This notion of 290
 local security (i.e., specific to individual vehicles) is extended to 291
 achieve global security by using the following two techniques: 292
 1) a preset position-based groups to form a communication 293
 network and 2) a dynamic challenging scheme to confirm the 294
 coordinate information sent by remote vehicles. Although the 295
 scope of our work in this paper does not cover these security 296
 aspects, we feel the importance to incorporate such safeguards 297
 to securely disseminate safety information/warning messages 298
 in VANETs in the future. 299

III. CLUSTER-BASED RISK-AWARE COOPERATIVE COLLISION-AVOIDANCE SYSTEM 300 301

302 In this section, we initially provide a brief overview of
 the functionality of the traditional CCA system proposed by 303
 Biswas *et al.* [17] and point out its shortcomings. We then 304
 propose our C-RACCA system, which consists of adequate 305
 solutions to address these issues, namely, a dynamic clustering 306
 procedure to formulate clusters of vehicles, followed by a 307
 uniquely designed risk-aware MAC protocol. 308

A. Shortcomings of the Traditional CCA Systems 309

310 In traditional CCA systems [17], upon an emergency situ-
 ation, a vehicle in the considered platoon dispatches warning 311
 messages to all other vehicles behind it. A recipient takes 312
 into account the direction of the warning message arrival with 313
 respect to its directional bearing and decides whether to pass 314

315 the message to other vehicles or not. Indeed, the message
 316 will be ignored if it comes from behind. To ensure a platoon-
 317 wide coverage, the message is transmitted over multiple hops.
 318 However, this approach leads to the following two problems:
 319 1) generation of a large number of messages, which literally
 320 flood the VANET, and 2) generation of redundant messages
 321 (originated from different vehicles) pertaining to the same
 322 emergency event. Consequently, message collisions are more
 323 likely to occur in the access medium with the increasing number
 324 of vehicles in the platoon. In addition, this naive approach
 325 of relaying the emergency message contributes to cumulative
 326 communication latencies, which, in turn, lead to a substantially
 327 high delay in delivering the warning message from the platoon
 328 front to the vehicles located at the rear of the platoon formation.
 329 To make matters even worse, in the case of multiple failed
 330 message retransmissions owing to excessive MAC collisions,
 331 this message-delivery latency increases further. To overcome
 332 these shortcomings of the existing CCA systems, we offer a
 333 novel approach that dynamically forms clusters of the vehicles
 334 in a platoon.

335 B. Dynamic Clustering of Vehicles

336 Prior to a detailed description of the envisioned clustering
 337 mechanism, it is essential to point out a number of assumptions
 338 regarding the considered VANET environment, as listed in the
 339 following.

- 340 1) To accurately estimate the current geographical location,
 341 each vehicle in the platoon consists of global positioning
 342 systems (GPSs) or similar tracking modules. It should
 343 be noted that the knowledge pertaining to the real-
 344 time coordinates of the vehicular nodes is an assump-
 345 tion made by most protocols and applications. Indeed,
 346 this is a reasonable enough assumption pointed out by
 347 Boukerche *et al.* [18] because the GPS receivers can
 348 easily be deployed on vehicles. However, as VANETs
 349 are evolving into more critical areas and becoming more
 350 reliant on localization systems, there may be certain
 351 undesired problems in the availability of GPS in certain
 352 scenarios (e.g., when the vehicles enter zones where GPS
 353 signals may not be detected, such as inside tunnels, under-
 354 ground parking, and so forth). Indeed, there exist several
 355 localization techniques, such as dead reckoning [19], cel-
 356 lular localization [21], and image/video localization [22],
 357 that may be used in VANETs so that this GPS limitation
 358 may be overcome. In addition, GEOCAST [20], which is
 359 one of our earlier developed protocols, may be used so
 360 that it is still possible to support some vehicles, which
 361 have lost GPS signals, or do not have GPS on board, to
 362 learn from the other vehicles and position themselves.
- 363 2) To facilitate communications, two distinct wireless chan-
 364 nels are considered to exchange signaling messages to
 365 formulate vehicles' clusters and to issue/forward warning
 366 messages, respectively.
- 367 3) Each vehicle is assumed to be capable of estimating its
 368 relative velocity with respect to neighboring vehicles. In
 369 addition, it is also considered to be able to compute, via
 370 adequately deployed sensors, intervehicular distances.

- 4) When a vehicle receives a warning message, it can esti- 371
 mate the direction of the message arrival, i.e., whether the 372
 received warning originated from a vehicle from the front 373
 or the rear. 374
- 5) Each vehicle is considered to have knowledge on its 375
 maximum wireless transmission range, which is denoted 376
 by T_r . A vehicle constantly uses this parameter to update 377
 its current transmission range R in the following manner: 378

$$R = T_r \cdot (1 - \epsilon), \quad 0 < \epsilon \leq 1 \quad (1)$$

where ϵ refers to the wireless channel fading conditions 379
 at the current position. Equation (1) is used for simple 380
 estimation of the practically possible transmission range 381
 from the given surrounding conditions that affect the 382
 maximum transmission range of the vehicle. To compute 383
 this, a simple parameter ϵ is used, which reflects the 384
 surrounding conditions. If the vehicle is currently moving 385
 in the downtown, then its transmission range will be 386
 lower than the maximum possible one. Because, there 387
 will be many obstacles (e.g., high-rise buildings, indus- 388
 tries, and other installations), which will interfere with 389
 the vehicle's wireless signal. To reflect this situation, ϵ in 390
 (1) is set to a high value in a downtown scenario. On the 391
 other hand, when a car is moving in the suburbs, there 392
 are fewer obstacles affecting the vehicle's transmitted 393
 signals. Therefore, in such a scenario, low values of ϵ are 394
 used to illustrate that the vehicle may use a transmission 395
 range that is closer to the maximum possible one. GPS or 396
 other positioning systems (e.g., Galileo) are used to ob- 397
 tain the terrain information so that the appropriate values 398
 of ϵ in a given location can be appropriately estimated. 399

Additionally, we consider, for clustering purposes, a platoon 400
 of vehicles, which travel along the same road toward the same 401
 direction. Consistent with previous work in this domain [15], 402
 the envisioned grouping of vehicles is, thus, based upon their 403
 movement directions. Directional-antenna-based MAC proto- 404
 cols [27] may be utilized to group the vehicles more accurately, 405
 whereby the transmission range of vehicles is split into M 406
 transmission angles of equal degrees ($360/M$). By assigning 407
 each transmission angle to a unique vehicle group, M groups 408
 can thus be formulated. 409

Similar in spirit with the assumptions in [15] and [27], our 410
 approach considers, in forming a cluster, only the vehicles that 411
 belong to the same group in terms of moving on the same road 412
 toward the same direction. Fig. 1 portrays an example of three 413
 such clusters. As depicted in this figure, a vehicle may act as a 414
 special node, i.e., as a cluster head (CH) or a subcluster head 415
 (SCH), or may merely drive as an ordinary vehicle (OV). In 416
 case of forming a CH, the vehicles are voluntarily required to 417
 consistently advertise for the cluster while maintaining and up- 418
 dating their respective cluster tables. On the other hand, the first 419
 SCH node is selected as the last vehicle that is reachable by the 420
 CH. Indeed, the SCH node may be used to define a subsequent 421
 SCH entity (i.e., the last vehicle reachable from this SCH node), 422
 and so forth. SCH nodes are in charge of relaying packets (e.g., 423
 emergency warning messages) from either a CH or from SCHs 424
 in front to other vehicles within the same cluster that lie outside 425

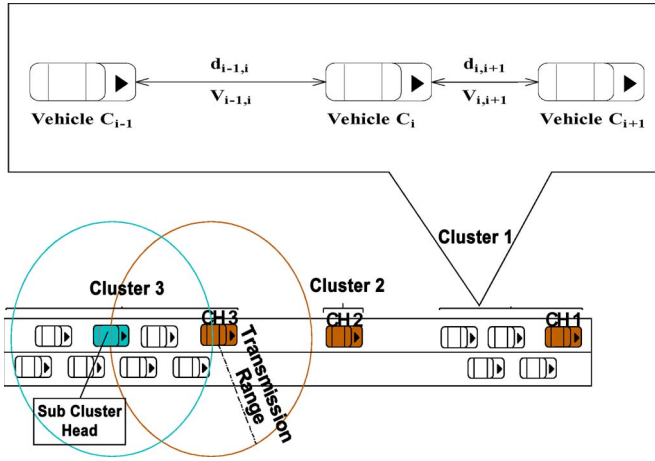


Fig. 1. Example of three clusters.

426 the CH's (or the front SCH's) transmission range. In addition, a
 427 SCH also aggregates information from OV's within its reach and
 428 relays them to the CHs/SCHs in front. It should be noted that
 429 it is a rare case to have a cluster containing a large number of
 430 SCHs. In such case, the cluster size will be significantly large,
 431 and vehicles will be more likely moving at very low speeds.
 432 Thus, chain collisions will not happen in such case. Finally,
 433 OV's comprise the ordinary members in the cluster that perform
 434 no specific task.

435 As demonstrated in the example in Fig. 1, C_i refers to the
 436 identification (ID) of vehicle i . For simplicity, we denote C_{i-1}
 437 and C_{i+1} as the vehicles ahead of and immediately behind C_i ,
 438 respectively. The transmission range of the former (provided
 439 that it exists) reaches C_i . On the other hand, the latter is
 440 reachable by C_i . The distance between a pair of vehicles C_j
 441 and C_k is denoted by $d_{j,k}$. V_j and $V_{j,k}$ refer to vehicle C_j 's
 442 actual velocity and the relative velocity with respect to vehicle
 443 C_k , respectively. Therefore, the magnitude of $V_{j,k}$ is assumed
 444 to be the same as that of $V_{k,j}$. Additional notations, which are
 445 used in the clustering operation, are listed as follows:

- 446 1) τ_j^a : time required for a vehicle C_j to reach vehicle C_{j-1}
 447 immediately ahead of it (i.e., $\tau_j^a = d_{j-1,j}/V_{j-1,j}$);
- 448 2) τ_j^b : time required for a vehicle C_j to be reached by vehicle
 449 C_{j+1} right behind it (i.e., $\tau_j^b = d_{j,j+1}/V_{j,j+1}$);
- 450 3) ϕ_j : set of CHs or SCHs in front of vehicle C_j ; this set
 451 also belongs to C_j 's group;
- 452 4) ϕ_j^{CH} : the closest CH or SCH ($\in \phi_j$) in front of
 453 vehicle C_j ;
- 454 5) ψ_j : set of CHs or SCHs behind vehicle C_j ; this set also
 455 belongs to C_j 's group;
- 456 6) ψ_j^{CH} : the closest CH or SCH ($\in \psi_j$) behind vehicle C_j ;
- 457 7) a_e and a_r : emergency deceleration and regular deceleration,
 458 respectively, which indicate the occurrence of an
 459 emergency event to trigger the transmission of critical
 460 warning messages;
- 461 8) δ : the average reaction time of individual drivers ($0.75 \leq$
 462 $\delta \leq 1.5$ s).

463 For each vehicle C_i and its immediately following vehicle
 464 C_{i+1} , we consider that no collision will occur between these
 465 two vehicles, and therefore, they are safe, provided that their

distance $d_{i,i+1}$ satisfies the following condition for $\Gamma_{i,i+1}$ (i.e., 466
 $\overline{\Gamma_{i,i+1}}$ denotes the negation of the condition): 467

$$\Gamma_{i,i+1} \Leftrightarrow d_{i,i+1} > \text{Min} \left(d_{max}, \alpha \cdot \left(V_{i+1} \cdot \delta + \frac{V_{i+1}^2}{2a_r} - \frac{V_i^2}{2a_e} \right) \right) \quad (2)$$

where α represents a tolerance factor. In addition, d_{max} denotes 468
 a safety distance in which if two vehicles are distant, no 469
 collision will occur between the two vehicles, regardless of 470
 the vehicles' velocities (e.g., in case of a maximum velocity 471
 $V_{max} = 180$ km/h, $d_{max} = V_{max} \cdot 1.5$ s = 75 m). It should be 472
 noted that the direction of the vehicles is not included in (2) 473
 since we consider the vehicles to be traveling along the same 474
 direction in the same lane. 475

Using the above notations, for any vehicle C_i , we have the 476
 following lemma: 477

$$\exists C_{i-1} \Leftrightarrow \phi_i \neq \emptyset \quad (3)$$

$$\exists C_{i+1} \Leftrightarrow \psi_i \neq \emptyset. \quad (4)$$

The proof of the lemma is trivial. 478

Three specific scenarios pertaining to a vehicle may exist in 479
 the envisioned clustering operation. A vehicle may be in one of 480
 the following three states. 481

- 482 1) It starts its engine and gets on a road.
- 483 2) It decides to travel in a different direction. Consequently,
 484 it leaves its old group G_o and joins a new group of
 485 vehicles, which is denoted by G_n .
- 486 3) It continues to travel on the same road without changing
 487 its direction. However, it increases or decreases its travel-
 488 ing speed.

In the remainder of this subsection, we describe the clus- 489
 tering mechanism in detail by focusing on each of the above 490
 scenarios. 491

1) *Joining a Group for the First Time*: A vehicle C_i , after it 492
 gets on a road, initially broadcasts a CH solicitation message 493
 to the neighboring vehicles, which are assumed to belong 494
 to group G_n . The CH solicitation message queries the other 495
 vehicles regarding the CH of G_n . Meanwhile, C_i also initiates 496
 a timer θ . The following two cases exist: 1) C_i receives no 497
 response, or 2) C_i receives at least one affirmative response 498
 to its initial query prior to expiration of θ . In the former case, 499
 where ($\phi_i = \psi_i = \emptyset$), C_i decides to assume the role of CH 500
 in G_n and starts constructing its own cluster. In the latter 501
 case, C_i needs to take into consideration the responses from 502
 other CH(s). At first, C_i verifies if any CH ahead of it has 503
 also transmitted a CH advertisement message. Otherwise, if 504
 ($\phi_i = \emptyset$), from the fact that $\psi_i \neq \emptyset$, C_i checks whether it 505
 maintains long enough distance ($d_{i,i+1}$) with C_{i+1} , which im- 506
 mediately follows it from behind. This verification is required 507
 to ascertain the safety condition ($\Gamma_{i,i+1}$) described earlier. 508
 If ($\Gamma_{i,i+1}$) holds, C_i constructs its own cluster and declares 509
 itself as the CH of this newly formed cluster. Otherwise (i.e., 510
 if $\overline{\Gamma_{i,i+1}}$), C_i takes over, from ψ_i^{CH} , the CH behind it by 511
 designating itself as the new CH (i.e., $C_i = \phi_{i+1}^{CH}$). 512

On the other hand, if C_i obtains a CH advertisement message 513
 from at least one CH ahead of it (i.e., $\phi_i \neq \emptyset$), it verifies whether 514

TABLE I
ALL POSSIBLE CASES FOR A VEHICLE C_i JOINING FOR THE FIRST TIME A GIVEN GROUP

$\phi_i = \emptyset$			$\phi_i \neq \emptyset$		
$\psi_i = \emptyset$	$\psi_i \neq \emptyset$		$\Gamma_{i,i-1}$		$\bar{\Gamma}_{i,i-1}$
Form own cluster	$\Gamma_{i,i+1}$	$\Gamma_{i,i+1}$	Form own cluster	$\Gamma_{i,i+1}$	Join ϕ_i^{CH}
	Form own cluster	Take authority of ψ_i^{CH}		Form own cluster	

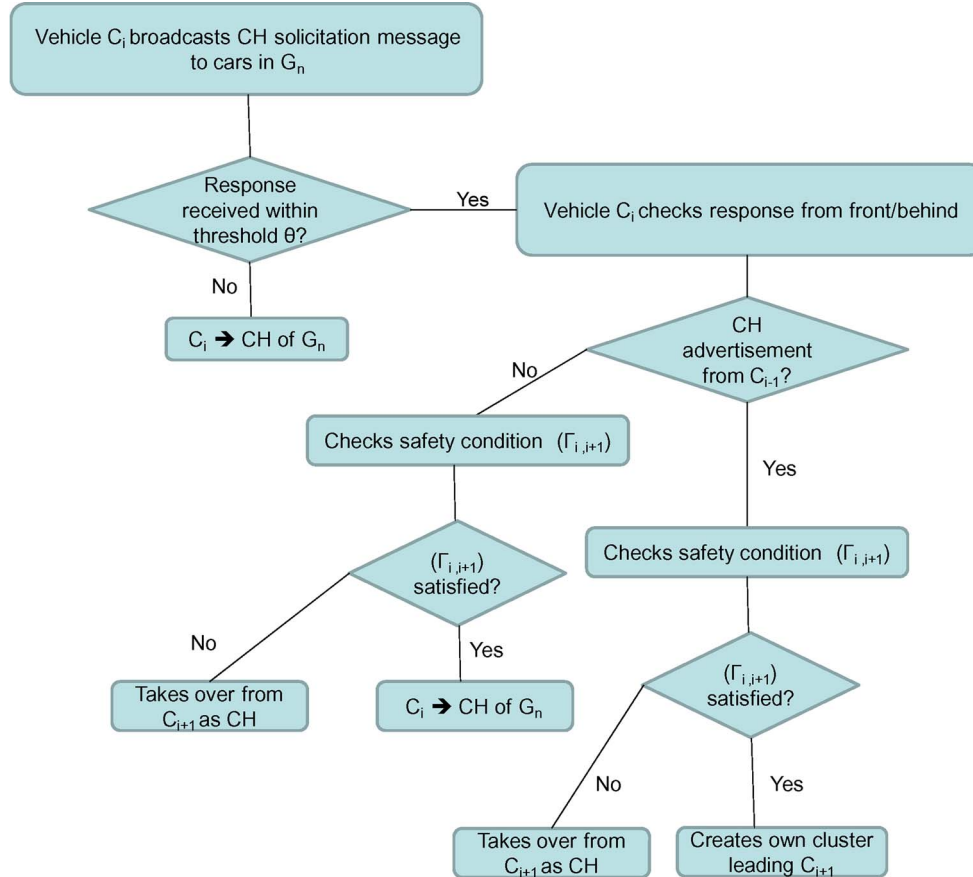


Fig. 2. Steps required for a vehicle to join a group for the first time.

515 the distance to the vehicle immediately ahead of it (C_{i-1})
 516 and belonging to the cluster CH is sufficiently large to avoid
 517 collision with C_{i-1} . C_i constructs its own cluster by designating
 518 itself as the CH, provided that 1) the condition $\Gamma_{i,i-1}$ holds and
 519 2) that no vehicle follows it from behind ($\psi_i = \emptyset$). If ($\psi_i \neq \emptyset$),
 520 the vehicle will check its distance to the vehicle right behind it
 521 and behave in a way similar to the case when ($\phi_i = \emptyset, \psi_i \neq \emptyset$).
 522 On the other hand, if the condition $\bar{\Gamma}_{i,i-1}$ persists, C_i is required
 523 to join the cluster formed by ϕ_i^{CH} . Table I summarizes all the
 524 aforementioned cases. The whole process of joining a group for
 525 the first time is illustrated in Fig. 2.

526 A vehicle C_i , which desires to join a given cluster, issues a
 527 self notification (SN) message that contains the vehicle's ID,
 528 current location, and transmission range to the concerned CH.
 529 Upon receiving the SN, the CH treats it as a solicitation request
 530 from C_i to join the cluster. The CH then adds C_i into its cluster
 531 table and informs the rest of the cluster members via an updated
 532 cluster advertisement (CA) message, which contains the IDs
 533 of all the involved entities including the cluster, the CH, the

SCH(s), and the OV(s). In the case that a new vehicle emerges as
 534 a new CH in the considered cluster, the previous CH needs to
 535 transfer the most recently updated cluster table to the new CH,
 536 which, in turn, broadcasts an updated CA packet to the cluster
 537 members to inform them regarding the changes. 538

2) *Departure From a Group and Joining a New One*: As
 539 mentioned earlier, the second scenario consists of a moving
 540 vehicle C_i that changes its direction, which results in its de-
 541 parture from its old group G_o to a new group G_n . C_i , at first,
 542 informs G_n about the departure event. Upon joining G_n , C_i
 543 either forms its own cluster or joins a preexisting one following
 544 the previously described steps in Section III-A1. 545 AQ1

The departure of C_i from G_o may yield three distinct cases,
 546 namely, whether C_i was the CH, a SCH, or merely an OV in
 547 G_o . These three cases are depicted in Fig. 3 and are delineated
 548 as follows. 549

- 1) *If C_i is an OV in G_o* : In this case, departure operation of
 550 C_i from G_o is trivial since it only requires notifying either
 551 the CH (denoted by CH_{G_o}) directly or the corresponding
 552

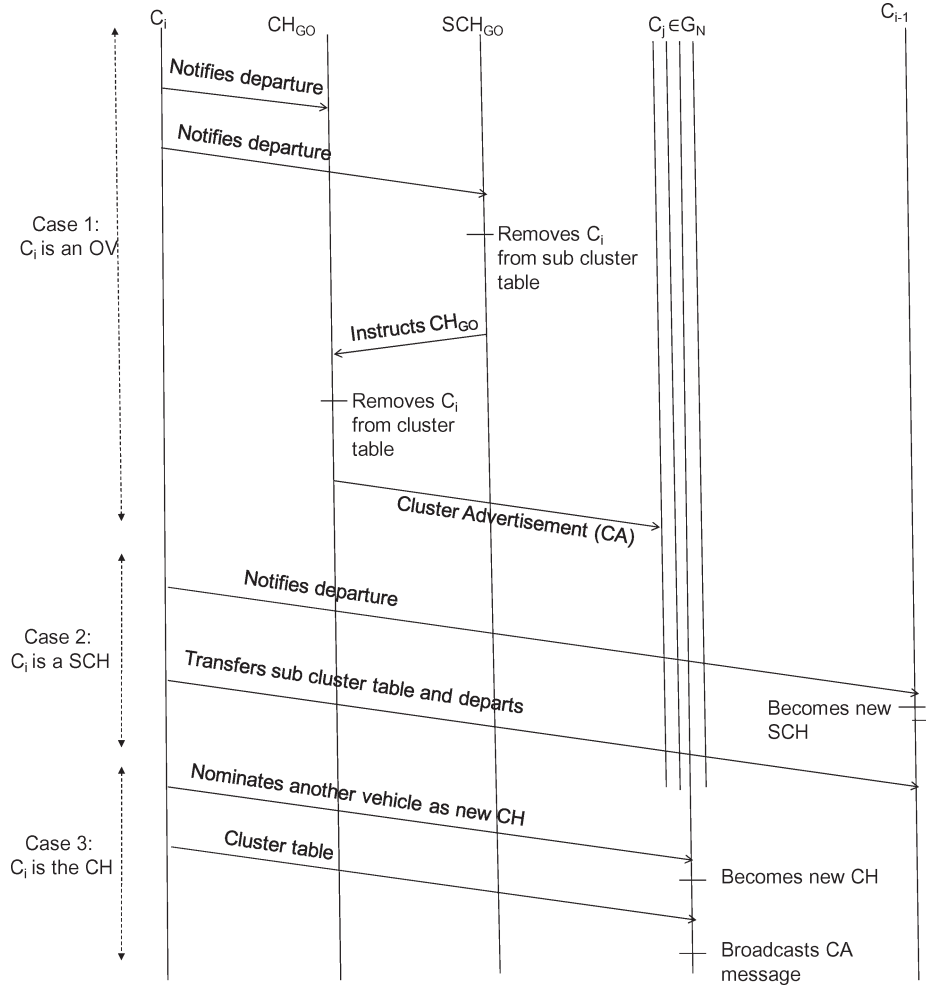


Fig. 3. Timeline diagram illustrating the departure event of a vehicle from a group.

553 SCH (i.e., SCH_{G_o}) similarly. In latter case, SCH_{G_o} first
 554 removes C_i from its subcluster table and instructs CH_{G_o}
 555 about the event that prompts CH_{G_o} , in its own turn,
 556 to delete C_i 's entry from its cluster table. Finally, CH_{G_o}
 557 issues an updated CA message to inform the rest of the
 558 members that C_i is no longer with G_o .
 559 2) If C_i is a SCH in G_o : C_i , in this scenario, will assign
 560 C_{i-1} in G_o to assume the responsibility of the new SCH.
 561 In addition, C_i also transfers the subcluster table to C_{i-1}
 562 before departing G_o .
 563 3) If C_i is a CH in G_o : This scenario requires C_i to assign
 564 the role of the new CH to another cluster member, which
 565 it deems most appropriate. In addition, C_i also transfers
 566 the cluster table to the new CH prior to its departure from
 567 G_o . The new CH notifies the rest of the cluster members
 568 regarding the change via an updated CA message.

569 Fig. 4 depicts a scenario whereby a vehicle A, with a trans-
 570 mission range T_A and speeding at a velocity V_A , turns onto a
 571 new street inclined by an angle α , while vehicle C, which is
 572 immediately ahead of it, and vehicle B, which is immediately
 573 behind it, continue moving straight along the same road at ve-
 574 locities V_C and V_B , respectively. Fig. 5 demonstrates the results
 575 obtained from numerical analysis that there is largely suffi-
 576 cient time for vehicle A to communicate with both vehicles C

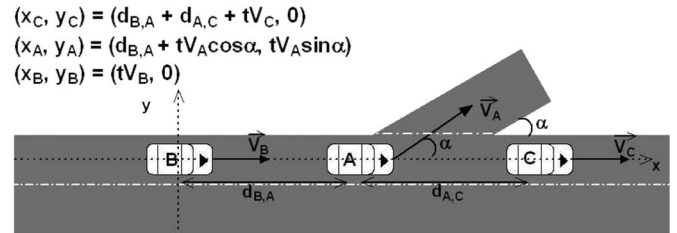


Fig. 4. Scenario showing a vehicle A turning onto a new street inclined by an angle α , while vehicles B and C continue moving straight on the same road.

and B in the case of the following two different scenarios: 1) a 577
 highway scenario where vehicles B and C speed at 120 km/h, 578
 and vehicle A reduces its speed to 60 km/h upon turning onto 579
 the new road and 2) an urban scenario where vehicles B and 580
 C move at 60 km/h, and vehicle A turns at a speed equal to 581
 30 km/h. The transmission range of vehicle A is set to 300 and 582
 150 m in the highway and urban scenarios, respectively. Fig. 6 583
 (derived from analytical computations) shows the time required 584
 to join a cluster in an urban and a highway scenario for different 585
 transmission ranges of vehicles. The figure clearly indicates that 586
 the time required for a vehicle to join a cluster is short in both 587
 scenarios and can be easily accommodated by the connectivity 588
 time shown in Fig. 5. 589

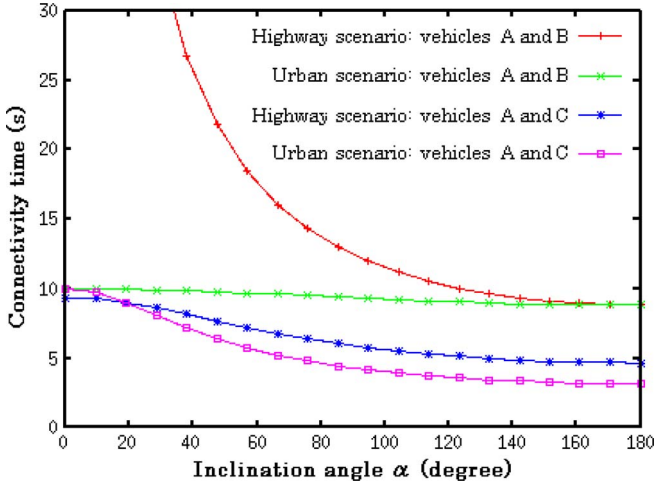


Fig. 5. Connectivity time for a vehicle, turning onto a new street inclined by an angle α , with vehicles right behind it and immediately ahead of it ($d_{B,A} = d_{A,C} = 15$ m).

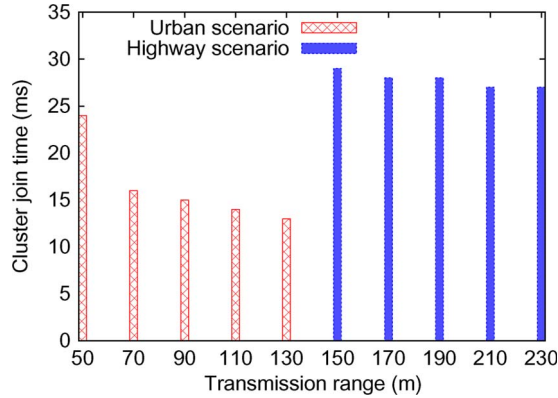


Fig. 6. Time required to join a cluster in an urban and a highway scenario, respectively.

590 3) *Intercluster Interactions Within a Particular Group*: In
591 a given group, the envisioned approach permits flexibility in
592 forming and interacting among clusters belonging to the same
593 group. For instance, a cluster may be split into two parts under
594 certain conditions. The reverse may also be possible, whereby
595 two clusters may merge into a single new cluster.

596 A particular cluster may be divided into two different clus-
597 ters, provided that each of the two adjacent vehicles, which are
598 denoted by C_i and C_{i+1} (both the vehicles are members of the
599 same cluster) continues to travel at a relative speed $V_{i,i+1}$ until
600 the intervehicular space $d_{i,i+1}$ satisfies the condition $\Gamma_{i,i+1}$.
601 When this condition persists, C_{i+1} becomes the CH in one
602 part of the former clusters containing the vehicles following
603 C_{i+1} from behind. On the other hand, C_i joins another part
604 of the previous cluster (consisting in vehicles C_i and beyond)
605 as an OV.

606 Two existing clusters may be allowed to merge and evolve as
607 a single one, provided that the distance between the CH of one
608 of the two clusters (denoted by C_l) and the last vehicle C_k in
609 the other cluster becomes so short that the condition $\bar{\Gamma}_{k,l}$ arises
610 and holds. In this new cluster, C_l will handle the cluster table
611 of the former cluster (i.e., to which C_k previously belonged).

C_l then broadcasts an updated CA message to all the members
612 to inform them regarding this change. 613

614 Conducting the aforementioned dynamic clustering opera-
615 tions, each group of vehicles moving along the same road and in
616 the same direction will be organized into a number of clusters of
617 different sizes and with independent cluster heads (see Fig. 1).
618 The distance between two adjacent clusters is always long
619 enough to avoid collisions between vehicles from both clus-
620 ters. On the other hand, the intervehicle distance between two
621 adjacent vehicles in a given cluster is always shorter than the
622 “safety distance.” Therefore, if a vehicle in a cluster detects an
623 emergency event and applies brakes, collisions among vehicles
624 are likely to happen if drivers do not react promptly. As stated
625 earlier, the exchange of signaling messages for the formation of
626 clusters is performed on a channel different than the one used to
627 transmit warning or emergency messages. MAC collisions due
628 to the transmission of such signals, thus, should not impact the
629 responsiveness of our proposed C-RACCA system. 629

C. Risk-Aware MAC Protocol 630

631 In this section, we describe the envisioned risk-aware MAC
632 protocol. To lay the basis of this work, we consider studying
633 the original MAC protocol in the IEEE 802.11 specifications,
634 owing to its enormous popularity among VANET designers and
635 researchers. For simplicity, the case of a single cluster is consid-
636 ered, whereby the vehicles are indexed based upon their order
637 within the cluster with respect to their movement directions.
638 In other words, without any loss of generality, C_1 refers to the
639 cluster head, C_2 refers to the car immediately behind it, and so
640 forth. In addition, we consider highway platoons for studying
641 the envisaged risk-aware MAC protocol due to the fact that the
642 likelihood of chain vehicle collisions is substantially high in a
643 highway. 643

644 The 802.11 standard currently defines a single MAC that
645 interacts with the following three PHY layers: 1) frequency-
646 hopping spread spectrum with a slot time $\xi = 50 \mu\text{s}$; 2) direct
647 sequence spread spectrum with a slot time equal to $\xi = 20 \mu\text{s}$;
648 and 3) infrared with a slot time equal to $\xi = 8 \mu\text{s}$. The general
649 concept behind the MAC protocol in IEEE 802.11 is that
650 when a mobile node desires to transmit, it first listens to the
651 desired channel. If the channel is idle (no active transmitters),
652 the node is allowed to transmit. If the medium is busy, the
653 node will defer its transmission to a later time and then to a
654 further contention period. To resolve contention issues among
655 different stations that are willing to access the same medium,
656 an exponential back-off mechanism is executed in the IEEE
657 802.11 MAC protocol prior to the calculation of the contention
658 period. This, however, significantly increases the data delivery
659 latency. Consequently, in the case of delay-sensitive safety-
660 critical CCA applications, the effectiveness of the original
661 802.11 MAC protocol decreases substantially. Indeed, high
662 latency in the dissemination of a warning message will lead to
663 scenarios where some vehicles will not have enough time to
664 react, and vehicle collisions become inevitable. To cope with
665 this shortcoming, we envision that the IEEE 802.11 back-off
666 procedure should be substituted by a more suitable mechanism,
667 which takes into account, in the contention window of a given

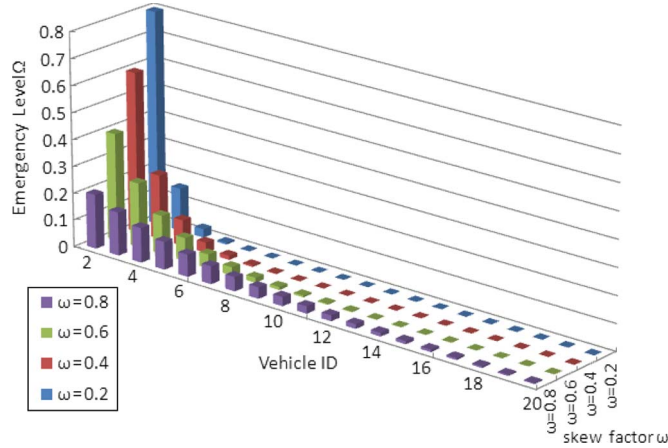


Fig. 7. Emergency level distribution of 20 vehicles for different values of the skew factor.

668 vehicle, its probability to encounter an emergency scenario. To
669 this end, an emergency level for every vehicle (denoted by C_i
670 without any loss of generality) in a particular cluster is defined
671 according to the distribution in

$$\Omega_i = \frac{(1-\omega)\omega^i}{\omega(1-\omega^S)}, \quad 1 \leq i \leq S \quad (5)$$

672 where S and ω refer to the cluster size and skew factor,
673 respectively. Fig. 7 demonstrates that setting ω to larger values
674 yields a uniform distribution of the emergency level of vehicles,
675 while assigning ω values close to zero results in a highly skewed
676 distribution.

677 In our envisioned risk-aware MAC protocol, the contention
678 window of a given vehicle C_i is computed based on the follow-
679 ing equation (rather than employing the traditional exponential
680 back-off procedure):

$$CW_i = \sum_{j=1}^k (1-\Omega_i)^j \cdot cw \cdot \xi \quad (6)$$

681 where k , ξ , and cw denote the number of transmission attempts,
682 the slot time of the used PHY layer, and the window size,
683 respectively. The reason behind computing the vehicles' con-
684 tention windows in this manner is to ascertain that the vehicles
685 with high probability of meeting an emergency situation may
686 enjoy short contention windows. Indeed, in case of multiple
687 failures to transmit the warning message ($k \gg 1$), the con-
688 tention window CW_i will converge to a value equal to ξ/Ω_i .
689 This should ensure smaller latency (after each failed attempt)
690 in the delivery of warning messages for vehicles with high
691 emergency levels Ω_i . Vehicles behind the car that detected the
692 event will then be able to avoid collisions.

693 Equation (6) ensures the system consistency to some extent
694 while adjusting the contention window of all the vehicles
695 belonging to a given cluster. However, there is a further need to
696 ascertain that the contention window is short enough so that the
697 maximum number of imminent collisions among vehicles may
698 be circumvented. To achieve this, the maximum delay, within
699 which a particular vehicle needs to be informed, is computed.
700 In the following, we consider the example of Fig. 1 and assume

that upon an emergency situation, vehicles C_i and C_{i+1} slow
701 down their velocities at rates denoted by a_e and a_r , respectively. 702
The next task is to calculate the maximum latency δ_i since the
703 detection of the emergency event, before which, C_i may be able
704 to notify C_{i+1} (i.e., the vehicle following C_i from behind) of the
705 event to avoid collision. 706

Vehicle C_i will be moving for a time period $\Delta_i = (V_i/a_e)$
707 before it eventually stops. The distances traveled by vehicles
708 C_i and C_{i+1} over Δ_i are denoted by l_i and l_{i+1} , respectively. 709
Equation (7) is used to compute l_i , and (8), shown below, is
710 employed to derive l_{i+1} as follows: 711

$$l_i = \frac{V_i^2}{2 \cdot a_e} \quad (7)$$

$$l_{i+1} = V_{i+1} \cdot \frac{V_i}{a_e} - \frac{a_r}{2} \left(\frac{V_i}{a_e} - \delta_i \right)^2. \quad (8)$$

To avoid collision between C_i and C_{i+1} , the following in-
712 equality should be satisfied by taking into consideration l_i and
713 l_{i+1} , i.e., 714

$$l_{i+1} > l_i + d_{i+1,i} + L_v \quad (9)$$

where L_v is the average vehicle length. This condition can
715 be satisfied if and only if C_{i+1} is notified at maximum δ_i^{\max}
716 time after the event-detection time (i.e., the time when C_i starts
717 decelerating), i.e., 718

$$\delta_i^{\max} = \text{Max} \left(\frac{V_i}{a_e} - \sqrt{\frac{2}{a_r} \cdot \left(\frac{V_i}{a_e} (V_{i+1} - \frac{V_i}{2}) - d_{i+1,i} - L_v \right)}, 0 \right). \quad (10)$$

The collision between C_i and C_{i+1} , however, becomes un-
719 avoidable when ($\delta_i^{\max} = 0$), which compels C_i to continue
720 broadcasting warning messages to all vehicles within its trans-
721 mission range. This provision is required to mitigate further
722 damage inflicted on the platoon by preventing vehicles that are
723 far behind from colliding with one another. Consequently, CW_i
724 (i.e., the contention window for vehicle C_i) is set as follows: 725

$$CW_i = \begin{cases} \sum_{j=0}^k (1-\Omega_i)^j \cdot cw \cdot \xi, & \text{if } \delta_i^{\max} = 0 \\ \text{Min} \left(\sum_{j=0}^k (1-\Omega_i)^j \cdot cw \cdot \xi, \delta_i^{\max} \right), & \text{otherwise.} \end{cases} \quad (11)$$

Unless otherwise specified, we set a_e , a_r , and L_v to 8 m/s²,
726 4.9 m/s², and 4 m, respectively. It should be noted that the
727 values of a_e and a_r can be used by the system as an indication
728 for an emergency event (e.g., a_e for cluster head, a_r or above for
729 other cluster members) to trigger the transmission of warning
730 messages. 731

On detecting an emergency event, a vehicle issues a warning
732 message to every member of its cluster (including SCHs) that
733 its transmission range currently covers. An SCH entity forwards
734 this message to each of its subcluster members. It should be
735 noted that a vehicle can safely discard messages originating
736 from vehicles following it from the back. Otherwise (i.e., if the
737 warning message arrives from the front), the recipient vehicle,
738 at once, reacts to it based on the event type included in the
739

740 warning message. If the recipient vehicle encounters redundant
741 warning messages, it takes action based on the first one only
742 and discards the rest of the duplicate copies.

743 IV. PERFORMANCE EVALUATION

744 A. Collision Model

745 Before delving into details of the considered collision model
746 in our simulation, we list a number of important parameters. Let
747 S and L_v denote the size of the considered cluster (where the
748 collisions are simulated) and the average vehicle length, respec-
749 tively. As mentioned earlier, we are more keen on focusing on
750 highway platoon scenarios, whereby the likelihood of collisions
751 among the cluster members is much higher in contrast with ur-
752 ban scenarios. In our simulated highway platoon environment,
753 we consider the most frequent scenario, whereby the CH (i.e.,
754 the vehicle in front of the platoon) identifies an emergency
755 event. When the CH detects an emergency situation at time t_0 ,
756 it slows down at an emergency deceleration a_e . The rest of the
757 vehicles are considered to slow down at a regular deceleration
758 a_r . For the sake of simplicity and without any loss of generality,
759 we further assume that when a vehicle C_i collides with a vehicle
760 C_{i-1} ahead of it, C_i immediately stops. On the other hand,
761 C_{i-1} keeps on traveling without deceleration. Although this
762 particular assumption does not conform to realistic scenarios,
763 it does not change any of the rudimentary observations made so
764 far on the envisioned C-RACCA framework.

765 Let Δt_i represent the latency since the detection of the
766 emergency event until vehicle C_i stops or collides with its
767 preceding vehicle C_{i-1} . The velocities of C_i at the time of
768 the event detection and after Δt_i time are denoted by V_i^o and
769 V_i^s , respectively. The delay incurred in delivering the warning
770 message to C_i is referred to as δ_i . It is worth noting that all
771 vehicles in the cluster (or subcluster) ought to experience sim-
772 ilar δ_i , provided that the broadcast of warning messages by the
773 CH/SCHs and their deliveries at the recipients are successful.
774 As previously evaluated in (7), l_i defines the distance traveled
775 by C_i since the event detection time until the vehicle completely
776 stops or collides with C_{i-1} . The following equations pertain to
777 the CH, i.e., C_1 :

$$\Delta t_1 = \frac{V_1^o}{a_e} \quad (12)$$

$$l_1 = V_1^o \Delta t_1 - \frac{1}{2} a_e \cdot \Delta t_1^2 \quad (13)$$

$$V_1^s = 0. \quad (14)$$

778 For other vehicles, except for the considered CH (i.e., C_i ,
779 $1 < i \leq S$), the conditions for two adjacent vehicles C_i and
780 C_{i-1} not to collide can be obtained in terms of the following
781 equations:

$$\Delta t_i = \frac{V_i^o}{a_r} + \delta_i \quad (15)$$

$$l_i = V_i^o \Delta t_i - \frac{1}{2} a_r \cdot (\Delta t_i - \delta_i)^2 \quad (16)$$

$$V_i^s = 0. \quad (17)$$

TABLE II
SIMULATION PARAMETERS

Factor	Range of values
Propagation model	TwoRayGround
Cluster size, S	20
Vehicle speed, V_i	15 - 45 m/s
Inter-vehicle distance, $d_{i,i+1}$	10 - 30 m
Emergency deceleration, a_e	8 m/s ²
Regular deceleration, a_r	4.9 m/s ²
Driver's reaction time, δ	0.75 - 1.5 s
Transmission range, T_r	150 m
Skew factor, ω	0.8
Average vehicle length, L_v	4 m
Slot time, ξ	50 μ s
Tolerance factor, α	3

On the other hand, in the case that C_i and C_{i-1} collide, the
following two distinct cases may be envisaged.

Case 1) C_i collides while C_{i-1} is still moving.

Case 2) C_{i-1} stops, and then, C_i hits C_{i-1} .

The following inequality should hold in case 2):

$$l_{i-1} + d_{i,i-1} + L_v \leq l_i. \quad (18)$$

In that time, Δt_i , l_i , and V_i^s will be computed as follows:

$$\Delta t_i = \Delta t_{i-1} \quad (19)$$

$$l_i = l_{i-1} + d_{i,i-1} + L_v \quad (20)$$

$$V_i^s = V_i^o - a_r \cdot (\Delta t_{i-1} - \delta_i). \quad (21)$$

For case 1, a time instant t_m should exist when

$$\begin{aligned} \exists t_m \quad & V_i^o(t_m - t_0) - \frac{1}{2} a_r \cdot (t_m - t_0 - \delta_i)^2 \\ & = V_{i-1}^o(t_m - t_0) - \frac{1}{2} \eta \cdot (t_m - t_0 - \delta_{i-1})^2 + L_v \end{aligned} \quad (22)$$

where ($\eta = a_e$) in the case of $i = 2$, or ($\eta = a_r$) for ($3 \leq i \leq S$). During that time, the values of Δt_i , l_i , and V_i^s are computed as follows:

$$\Delta t_i = t_m - t_0 \quad (23)$$

$$l_i = V_i^o(t_m - t_0) - \frac{1}{2} a_e \cdot (t_m - t_0 - \delta_i)^2 \quad (24)$$

$$V_i^s = V_i^o - a_r \cdot (t_m - t_0 - \delta_i). \quad (25)$$

B. Simulation Results

The simulations are conducted using the network simulator (NS-2) [29] based on the collision model delineated in Section IV-A. The simulation parameters are listed in Table II. The transmission ranges of the vehicles and the minimum intervehicular distance are set to 150 and 10 m, respectively. The reason behind these choices is to have at least one SCH in a simulated cluster. As comparison terms, we adopt 1) a CCA system, which is based upon the IEEE MAC protocol that uses the exponential back-off algorithm for calculating contention windows of the vehicles [17] and 2) the absence of a CCA system, whereby the traditional reaction of drivers is considered to be the key factor in avoiding collisions.

We simulate two scenarios. In the first scenario, all vehicles move at a steady speed, and the intervehicle distance is chosen

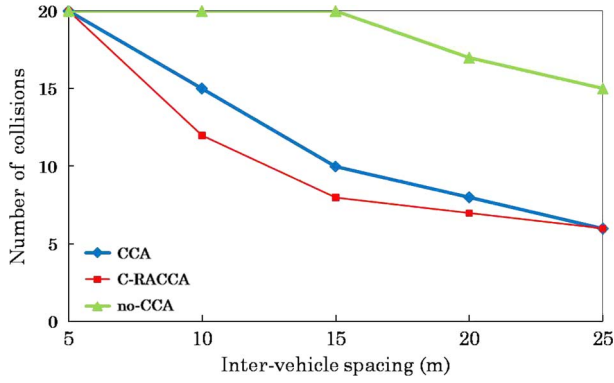


Fig. 8. Number of collided vehicles for different intervehicle distances (scenario 1, vehicle speed = 32 m/s).

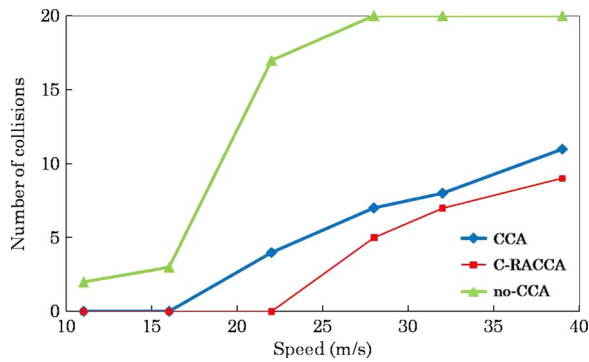


Fig. 9. Number of collided vehicles for different velocities of the cluster head (scenario 2).

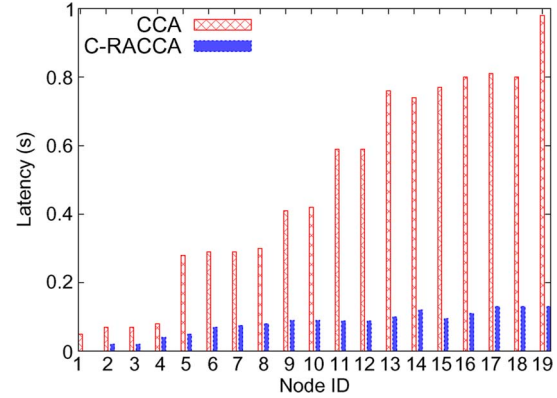


Fig. 10. Warning message delivery latency δ_i for each vehicle C_i (scenario 1, intervehicle distance = 15 m, vehicle speed = 32 m/s).

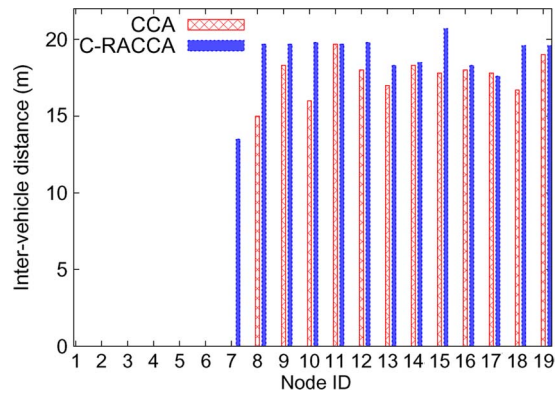


Fig. 11. Relative intervehicle distance $d_{i,i-1}$ after stop (scenario 1, intervehicle distance = 15 m, vehicle speed = 32 m/s).

807 from within the interval [10 m, 30 m]. On the other hand, in the 808 second scenario, the intervehicle distance is arbitrarily selected 809 from within the range [10 m, 30 m] for each pair of collocated 810 vehicles. Each vehicle travels at varying speeds. The CH, which 811 travels at the front of the cluster, moves at a speed that is 812 selected from an interval [22 m/s, 42 m/s]. The velocities of 813 the rest of the cars are carefully chosen not to cause collisions 814 among them. An emergency situation is simulated by having 815 the CH collide with a fixed object that compels the CH to slow 816 down rapidly. Consequently, a number of warning messages are 817 broadcast. The simulation results that we provide here are an 818 average of multiple simulation runs.

819 The number of collisions for various intervehicle distances 820 in the case of the proposed C-RACCA, CCA, and no-CCA 821 systems are plotted in Fig. 8. It can be deduced from this 822 figure that the number of collisions decreases as the intervehicle 823 distance increases significantly. The results demonstrate that the 824 C-RACCA scheme helps save many vehicles from colliding 825 into others. Fig. 9 exhibits a similar performance in the case 826 of scenario 2. As shown in this figure, the reduced number of 827 vehicle collisions achieved by the C-RACCA approach, even 828 when the CH travels at a reasonably high speed, in contrast 829 with CCA and no-CCA systems, is attributable to its ability to 830 swiftly inform the cluster members regarding the emergency 831 situation. Fig. 10 sheds more light on this issue by indicating 832 the fact that vehicles experience significantly high delays in 833 delivering/receiving the warning messages in case of the tra- 834 ditional CCA system. It is worth stressing that these latencies

also include the delay in receiving the first warning message. 835 Indeed, in the proposed system, not all vehicles reforward the 836 warning message. In fact, only the CH and SCHs do so. Fig. 10 837 also demonstrates that in the case of the CCA system, the ten 838 last vehicles at the rear of the cluster experience a relatively 839 longer time to disseminate the warning messages. The reason 840 behind this is the occurrence of multiple MAC collisions owing 841 to the concurrent delivery of warning messages by the first 842 ten cars. On the contrary, the envisioned C-RACCA system 843 ascertains that only the vehicle which encountered the emer- 844 gency situation (e.g., the CH in our simulation scenarios) and/or 845 SCHs are in charge of delivering the warning messages. This 846 provision assists C-RACCA in avoiding message collisions. 847 Consequently, a large number of vehicles receive the warning 848 message in a relatively short latency. Indeed, this enables 849 the vehicles to respond to the emergency situation in a swift 850 manner. 851

The superior performance of the proposed C-RACCA 852 scheme is further evident from Figs. 11 and 12. Fig. 11 exhibits 853 that the relative intervehicle distances (after the vehicles have 854 stopped) are longer in the case of the proposed C-RACCA 855 scheme compared with the other naive approaches. It should be 856 noted that in most cases, a significantly long relative distance 857 between two adjacent vehicles C_i and C_{i+1} suggests that C_{i+1} 858 responded rapidly to the emergency situation to achieve a 859 sufficiently long distance from the vehicle ahead, i.e., C_i . This 860 distance is of high importance in our evaluation due to the 861

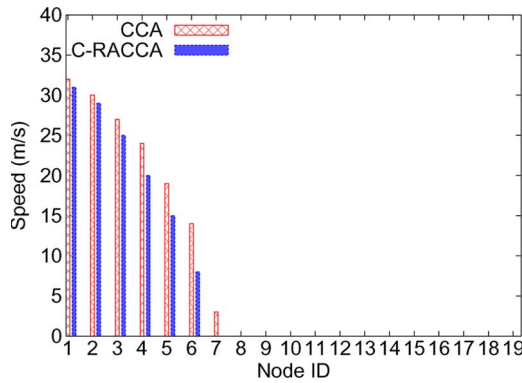


Fig. 12. Relative speed $V_{i,i-1}$ at the time of collision. In the absence of collision, $V_{i,i-1} = 0$ (scenario 1, intervehicle distance = 15 m, vehicle speed = 32 m/s).

862 fact that C_i may explode at the time of collision (e.g., due to
863 fuel leakage and so forth). Additionally, Fig. 12 demonstrates
864 another important feature of the C-RACCA system in terms of
865 the smaller magnitude of the relative velocity of each vehicle at
866 the time of collision. This mitigates the severity and impact of
867 any collision.

868

V. CONCLUSION

869 In this paper, we have proposed an effective collision-
870 avoidance strategy for vehicular networks that we refer to as
871 the C-RACCA system. As it can be inferred from its name,
872 the C-RACCA forms clusters of vehicles that belong to the
873 same group. A number of features pertaining to the movements
874 of the vehicles are taken into account to construct effective
875 clusters. We envisioned a set of mechanisms to enable vehicles
876 to join or depart from a specific cluster. Indeed, the clustering
877 mechanisms lead to various heterogeneous clusters, i.e., multi-
878 ple clusters with different sizes, independent cluster heads, and
879 different numbers of subcluster heads.

880 The other contribution of the C-RACCA system lies in
881 the fact that it enhances existing MAC protocols to ascertain
882 relatively short latencies in disseminating warning messages
883 after an emergency situation is detected. For each vehicle, an
884 emergency level is defined based upon its order in the cluster
885 with respect to the moving direction of the cluster. In the
886 C-RACCA system, the warning message latency is calculated
887 in such a manner that it is inversely proportional to the emer-
888 gency level of the considered vehicle. This reflects the probabil-
889 ity of the vehicle to encounter an emergency event in the cluster.
890 The second rationale lies in the fact that the latency estimation
891 takes into consideration the velocities and intervehicle distances
892 of adjacent vehicles and, thereby, manages to avoid colliding
893 with each other.

894 Various simulations have been conducted in two unique sce-
895 narios to verify and compare the performance of the proposed
896 C-RACCA system with those of the naive CCA and no-CCA
897 approaches. The simulation results clearly exhibit the applica-
898 bility of the C-RACCA approach in VANET environments
899 since it reduces both the number of collisions and the impacts
900 of collisions when they inevitably occur.

901 Admittedly, our work has considered a distribution with a
902 predetermined skew factor (i.e., ω) to estimate the emergency

903 levels of the vehicles that are used to compute the warning mes-
904 sage delivery latency. However, in the future, further investiga-
905 tion regarding any possible correlation between the skew factor
906 and the attributes of a specific cluster (in terms of its average
907 intervehicle distance, average velocity, size, and so forth) is
908 required. The relationship between the transmission ranges of
909 the vehicles in a given cluster and the size of that cluster also
910 needs further investigation. In addition, the impact of chan-
911 nel conditions on the delivery of warning messages and their
912 overall impact on the C-RACCA's performance also deserve
913 further studies. Furthermore, the management of intercluster
914 communications may also open up interesting research scopes.
915 These form some of our future research into this particular area
916 of research.

REFERENCES

- [1] T. Taleb, K. Ooi, and K. Hashimoto, "An efficient collision avoidance strategy for ITS systems," in *Proc. WCNC*, Las Vegas, NV, Mar. 2008, pp. 2212–2217.
- [2] X. Yang, J. Liu, F. Zhao, and N. H. Vaidya, "A vehicle-to-vehicle communication protocol for cooperative collision warning," in *Proc. MOBIQUITOUS*, Boston, MA, Aug. 2004, pp. 114–123.
- [3] T. D. C. Little and A. Agarwal, "An information propagation scheme for VANETs," in *Proc. 8th Intell. Transp. Syst.*, Vienna, Austria, Sep. 2005, pp. 155–160.
- [4] A. Bachir and A. Benslimane, "A multicast protocol in ad hoc networks inter-vehicle," in *Proc. IEEE VTC*, Orlando, FL, Apr. 2003, pp. 2456–2460.
- [5] N. Wisitpongphan, O. K. Tonguz, J. S. Parikh, P. Mudalige, F. Bai, and V. Sadekar, "Broadcast storm mitigation techniques in vehicular ad hoc networks," *IEEE Trans. Wireless Commun.*, vol. 14, no. 6, pp. 84–94, Dec. 2007.
- [6] B. Gallagher, H. Akatsuka, and H. Suzuki, "Wireless communications for vehicle safety: Radio link performance and wireless connectivity methods," *IEEE Veh. Technol. Mag.*, vol. 1, no. 4, pp. 4–24, Dec. 2006.
- [7] H. Hartenstein and K. P. Laberteaux, "A tutorial survey on vehicular ad hoc networks," *IEEE Commun. Mag.*, vol. 46, no. 6, pp. 164–171, Jun. 2008.
- [8] M. Torrent-Moreno, "Inter-vehicle communications: Achieving safety in a distributed wireless environment—Challenges, systems and protocols," Ph.D. dissertation, Univ. Karlsruhe, Karlsruhe, Germany, Jul. 2007.
- [9] M. L. Sichitiu and M. Kihl, "Inter-vehicle communication systems: A survey," *IEEE Commun. Surveys Tuts.*, vol. 10, no. 2, pp. 88–105, Apr. 2008.
- [10] Y. Toor, P. Mühlethaler, A. Laouiti, and A. de La Fortelle, "Vehicle ad hoc networks: Applications and related technical issues," *IEEE Commun. Surveys Tuts.*, vol. 10, no. 3, pp. 74–88, Jul. 2008.
- [11] F. F. Kuo, "The ALOHA system," in *Computer Networks*. Englewood Cliffs, NJ: Prentice-Hall, 1973, pp. 501–518.
- [12] V. Anantharam, "The stability region of the finite-user slotted ALOHA protocol," *IEEE Trans. Inf. Theory*, vol. 37, no. 3, pp. 535–540, May 1991.
- [13] F. Borgonovo, A. Capone, M. Cesana, and L. Fratta, "ADHOC MAC: New MAC architecture for ad hoc networks providing efficient and reliable point-to-point and broadcast services," *Wireless Netw.*, vol. 10, no. 4, pp. 359–366, Jul. 2004.
- [14] J. Zhang, K. H. Liu, and X. Shen, "A novel overlay token ring protocol for inter-vehicle communication," in *Proc. IEEE ICC*, Beijing, China, May 2008, pp. 4904–4909.
- [15] T. Taleb, E. Sakhaee, K. Hashimoto, A. Jamalipour, N. Kato, and Y. Nemoto, "A stable routing protocol to support ITS services in VANET networks," *IEEE Trans. Veh. Technol.*, vol. 56, no. 6, pp. 3337–3347, Nov. 2007.
- [16] T. Adachi, H. Murata, K. Yamamoto, and S. Yoshida, "Study of reservation MAC protocol using receiving status of interfered vehicles for ITS inter-vehicle communications," *IEICE Tech. Rep.*, vol. 108, no. 471, pp. 11–16, Mar. 2009.
- [17] S. Biswas, R. Tatchikou, and F. Dion, "Vehicle-to-vehicle wireless communication protocols for enhancing highway traffic safety," *IEEE Commun. Mag.*, vol. 44, no. 1, pp. 74–82, Jan. 2006.
- [18] A. Boukerche, H. Oliveira, E. F. Nakamura, and A. Loureiro, "Vehicular ad hoc networks: A new challenge for localization-based systems," *Comput. Commun.*, vol. 31, no. 12, pp. 2838–2849, Jul. 2008.

974 [19] T. King, H. Fubler, M. Transier, and W. Effelsberg, "Dead-reckoning for
975 position-based forwarding on highways," in *Proc. 3rd Int. WIT*, Hamburg,
976 Germany, Mar. 2006, pp. 199–204.

977 [20] A. Benslimane and A. Bachir, "Inter-vehicle geocast protocol support-
978 ing non equipped GPS vehicles," in *Proc. Int. Conf. ADHOC-NOW*,
979 Montreal, QC, Canada, Oct. 2003, vol. 2865, pp. 281–286, Lecture Notes
980 Comput. Sci.

981 [21] M. Chen, D. Haehnel, J. Hightower, T. Sohn, A. LaMarca, I. Smith,
982 D. Chmelev, J. Hughes, and F. Potter, "Practical metropolitan-scale
983 positioning for GSM phones," in *Proc. 8th UbiComp*, Orange County,
984 CA, Sep. 2006, pp. 225–242.

985 [22] F. Chausse, J. Laneurit, and R. Chapuis, "Vehicle localization on a dig-
986 ital map using particles filtering," in *Proc. IEEE Intell. Vehicles Symp.*,
987 Las Vegas, NV, Jun. 2005, pp. 243–248.

988 [23] H. Wu, R. Fujimoto, R. Guensler, and M. Hunter, "MDDV: A mobility-
989 centric data dissemination algorithm for vehicular networks," in *Proc.*
990 *1st ACM Workshop Veh. Ad Hoc Netw.*, Philadelphia, PA, Oct. 2004,
991 pp. 47–56.

992 [24] H. Menouar, F. Filali, and M. Lenardi, "A survey and qualitative analy-
993 sis of MAC protocols for vehicular ad hoc networks," *IEEE Wireless*
994 *Commun.*, vol. 13, no. 5, pp. 30–35, Oct. 2006.

995 [25] O. Tickoo and B. Sikdar, "Queueing analysis and delay mitigation in
996 IEEE 802.11 random access MAC-based wireless networks," in *Proc.*
997 *IEEE INFOCOM*, Hong Kong, Mar. 2004, pp. 1404–1413.

998 [26] Standard Specification for Telecommunications and Information Ex-
999 change Between Roadside and Vehicle Systems—5 GHz Band Dedicated
1000 Short Range Communications (DSRC) Medium Access Control (MAC)
1001 and Physical Layer (PHY) Specifications, ASTM E2213-03, Sep. 2003.

1002 [27] Z. Huang, C. Shen, C. Srisathapornphat, and C. Jaikaeo, "A busy tone-
1003 based directional MAC protocol for ad hoc networks," in *Proc. IEEE*
1004 *MILCOM*, Anaheim, CA, Oct. 2002, pp. 1233–1238.

1005 [28] G. Yan, S. Olairu, and M. C. Weigle, "Providing VANET security through
1006 active position detection," *Comput. Commun.*, vol. 31, no. 12, pp. 2883–
1007 2897, Jul. 2008.

1008 [29] Network Simulator—NS-2. [Online]. Available: [http://www.isi.edu/](http://www.isi.edu/nsnam/ns/)
1009 [nsnam/ns/](http://www.isi.edu/nsnam/ns/)



Abderrahim Benslimane (SM'08) received the B.S. 1043
degree from the University of Nancy, Nancy, France, 1044
in 1987 and the Ph.D. and DEA M.S. degrees 1045
from the Franche-Comte University of Besancon, 1046
Besancon, France, in 1993 and 1989, respectively, all 1047
in computer science. He received the HDR degree 1048
(the title to supervise research) from the University 1049
of Cergy-Pontoise, Cergy-Pontoise, France. 1050

He has been a Full Professor of computer science 1051
and engineering with the University of Avignon, 1052
Avignon, France, since September 2001. He has 1053

been an Associate Professor with the University of Technology of Belfort- 1054
Montbéliard, Belfort, France, since September 1994. His research and teaching 1055
interests are in wireless ad hoc and sensor networks. Particularly, he works 1056
on multicast routing, intervehicular communications, quality of service, energy 1057
conservation, localization, intrusion detection, and medium-access control layer 1058
performance evaluation. He was also interested in the specification and verifi- 1059
cation of communication protocols, group communication algorithms, and 1060
multimedia synchronization. He has several refereed international publications 1061
(book, journals, and conferences) in all those domains. 1062

Dr. Benslimane is member of the CA of the IEEE French section, a 1063 AQ2
member of the IEEE Communications Society Communications and Informa- 1064
tion Security Technical Committee, and the Vice President of the IEEE France 1065
student activities section. He has served as a Technical Program Committee 1066
Chair and Cochair and as a member of a number of international conferences. 1067
He has been a reviewer for a great number of journals and national research 1068
projects sponsored by the ANR/Telecom. He is involved in many national and 1069 AQ3
international projects. He is a member of many editorial boards of international 1070
journals. He chairs many IEEE international conferences. He participates in the 1071
Steering and Program Committees of many IEEE international conferences. 1072



Khaled Ben Letaief (S'85–M'86–SM'97–F'03) re- 1073
ceived the B.S. degree with distinction in electrical 1074
engineering from Purdue University, West Lafayette, 1075
IN, in December 1984 and received the M.S. and Ph.D. 1076
degrees in electrical engineering from Purdue Uni- 1077
versity in August 1986 and May 1990, respectively. 1078

From January 1985 and as a Graduate Instructor 1079
with the School of Electrical Engineering, Purdue 1080
University, he taught courses in communications 1081
and electronics. From 1990 to 1993, he was a 1082
faculty member with the University of Melbourne, 1083

Melbourne, Australia. Since 1993, he has been with the Hong Kong University 1084
of Science and Technology (HKUST), Kowloon, Hong Kong, where he is 1085
currently the Dean of Engineering. He is also a Chair Professor of electronic 1086
and computer engineering as well as the Director of the Hong Kong Telecom 1087
Institute of Information Technology and the Wireless Integrated Circuit System 1088
Design Center. He has served as a consultant to different organizations. His 1089
current research interests include wireless and mobile networks, broadband 1090
wireless access, orthogonal frequency-division multiplexing, cooperative 1091
networks, cognitive radio, multiple-input–multiple-output, and beyond third- 1092
generation systems. In these areas, he has over 400 journal and conference 1093
papers and has given invited keynote talks as well as courses all over the world. 1094
He has also three granted patents and ten pending U.S. patents. 1095

Dr. Letaief is the founding Editor-in-Chief of the IEEE TRANSACTIONS ON 1096
WIRELESS COMMUNICATIONS. He has served on the editorial boards of other 1097
prestigious journals, including the IEEE JOURNAL ON SELECTED AREAS 1098
IN COMMUNICATIONS—Wireless Series (as Editor-in-Chief). He has been 1099
involved in organizing a number of major international conferences and events. 1100
These include serving as a Co-Technical Program Chair of the 2004 IEEE 1101
International Conference on Communications, Circuits, and Systems, a General 1102
Cochair of the 2007 IEEE Wireless Communications and Networking Confer- 1103
ence, a Technical Program Cochair of the 2008 IEEE International Conference 1104
on Communication, and the Vice General Chair of the 2010 IEEE International 1105
Conference on Communication. He served as an elected member of the IEEE 1106
Communications Society Board of Governors and as an IEEE Distinguished 1107
Lecturer. He also served as the Chair of the IEEE Communications Society 1108
Technical Committee on Wireless Communications, Chair of the Steering 1109
Committee of the IEEE TRANSACTIONS ON WIRELESS COMMUNICATIONS, 1110
and Chair of the 2008 IEEE Technical Activities/Member and Geographic Ac- 1111
tivities Visits Program. He is a member of the IEEE Communications Society 1112
and the IEEE Vehicular Technology Society Fellow Evaluation Committees, as 1113
well as a member of the IEEE Technical Activities Board/Publications Services 1114
and Products Board Products and Services Committee. He is the recipient of 1115
many distinguished awards, including the Michael G. Gale Medal for Distin- 1116
guished Teaching (highest university-wide teaching award at HKUST), the 1117
2007 IEEE Communications Society Publications Exemplary Award, and eight 1118
Best Paper Awards, with the latest being the prestigious 2009 IEEE Marconi 1119
Prize Paper Award in Wireless Communications. He is currently serving as the 1120
Vice President for Conferences of the IEEE Communications Society. 1121



Tarik Taleb (S'04–M'05) received the B.E. degree 1010
(with distinction) in information engineering and 1011
the M.Sc. and Ph.D. degrees in information sciences 1012
from Tohoku University, Sendai, Japan, in 2001, 1013
2003, and 2005, respectively. 1014

He is currently a Senior Researcher with NEC 1015
Europe Ltd., Heidelberg, Germany. Prior to his 1016
current position and until March 2009, he was 1017
an Assistant Professor with the Graduate School 1018
of Information Sciences, Tohoku University. From 1019
October 2005 until March 2006, he was a Research 1020

Fellow with the Intelligent Cosmos Research Institute, Sendai. He is on the 1021
editorial board of a number of Wiley journals. His research interests include 1022
architectural enhancements to third-generation partnership project networks 1023
(i.e., LTE), mobile multimedia streaming, wireless networking, intervehicular 1024
communications, satellite and space communications, congestion control pro- 1025
tocols, network management, handoff and mobility management, and network 1026
security. His recent research has also focused on on-demand media transmission 1027
in multicast environments. 1028

Dr. Taleb is on the editorial board of the IEEE TRANSACTIONS ON 1029
VEHICULAR TECHNOLOGY and the IEEE Communications Surveys and 1030
Tutorials. He also serves as Vice Chair of the Satellite and Space Communi- 1031
cations Technical Committee of the IEEE Communications Society (ComSoc) 1032
(2006–present). He has been on the Technical Program Committee of several 1033
IEEE conferences, including Globecom, the IEEE International Conference 1034
on Communications, and the IEEE Wireless Communications and Networking 1035
Conference and has chaired some of their symposia. He received the 2009 IEEE 1036
ComSoc Asia-Pacific Young Researcher Award, the 2008 TELECOM System 1037
Technology Award from the Telecommunications Advancement Foundation, 1038
the 2007 Funai Foundation Science Promotion Award, the 2006 IEEE Com- 1039
puter Society Japan Chapter Young Author Award, the 2005 Niwa Yasujirou 1040
Memorial Award, and the 2003 Young Researcher's Encouragement Award 1041
from the Japan chapter of the IEEE Vehicular Technology Society. 1042

AUTHOR QUERIES

AUTHOR PLEASE ANSWER ALL QUERIES

AQ1 = Which section are you exactly referring to here?

AQ2 = What does CA stand for? Please write it out in full.

AQ3 = What does ANR stand for?

NOTE: "IEEE Commun. Magazine, Vol. 44, No. 1, pp. 535-547, Jan. 2006" was deleted in Ref. [23]. Please check if OK.

END OF ALL QUERIES

Toward an Effective Risk-Conscious and Collaborative Vehicular Collision Avoidance System

Tarik Taleb, *Member, IEEE*, Abderrahim Benslimane, *Senior Member, IEEE*, and Khaled Ben Letaief, *Fellow, IEEE*

Abstract—In this paper, we introduce a cooperative collision-avoidance (CCA) scheme for intelligent transport systems. Unlike contemporary strategies, the envisioned scheme avoids flooding the considered vehicular network with high volumes of emergency messages upon accidental events. We present a cluster-based organization of the target vehicles. The cluster is based upon several criteria, which define the movement of the vehicles, namely, the directional bearing and relative velocity of each vehicle, as well as the intervehicular distance. We also design a risk-aware medium-access control (MAC) protocol to increase the responsiveness of the proposed CCA scheme. According to the order of each vehicle in its corresponding cluster, an emergency level is associated with the vehicle that signifies the risk of encountering a potential emergency scenario. To swiftly circulate the emergency notifications to collocated vehicles to mitigate the risk of chain collisions, the medium-access delay of each vehicle is set as a function of its emergency level. Due to its twofold contributions, i.e., the cluster-based and risk-conscious approaches, our adopted strategy is referred to as the cluster-based risk-aware CCA (C-RACCA) scheme. The performance of the C-RACCA system is verified through mathematical analyses and computer simulations, whose results clearly verify its effectiveness in mitigating collision risks of the vehicles arising from accidental hazards.

Index Terms—Cooperative collision avoidance (CCA), intervehicle communication (IVC), vehicular ad-hoc network (VANET).

I. INTRODUCTION

ALONG with the ongoing advances in dedicated short-range communication (DSRC) and wireless technologies, intervehicular communication (IVC) and road-vehicle communication (RVC) have become possible, giving birth to a new network-type called vehicular ad-hoc network (VANET). The key role that VANETs can play in the realization of intelligent transport systems has attracted the attention of major car manufacturers (e.g., Toyota, BMW, and Daimler-Chrysler). A number of important projects have been subsequently launched. Crash Avoidance Metrics Partnership (CAMP), Chauffeur in Europe Union, CarTALK2000, FleetNet, and DEMO 2000 by the Japan Automobile Research Institute (JSK) are a few notable examples.

Manuscript received May 4, 2009; revised September 16, 2009 and December 23, 2009. The review of this paper was coordinated by Prof. H. Hassanein.

T. Taleb is with NEC Europe Ltd., 69115 Heidelberg, Germany (e-mail: talebtarik@ieee.org).

A. Benslimane is with the University of Avignon, 84029 Avignon, France (e-mail: abderrahim.benslimane@univ-avignon.fr).

K. B. Letaief is with the Hong Kong University of Science and Technology, Kowloon, Hong Kong (e-mail: eekhaled@ece.ust.hk).

Color versions of one or more of the figures in this paper are available online at <http://ieeexplore.ieee.org>.

Digital Object Identifier 10.1109/TVT.2010.2040639

VANETs can be used for a plethora of applications, ranging from comfort and infotainment applications to onboard active safety applications. The latter are the most attractive and promising ones. Such applications assist drivers in avoiding collisions. They coordinate among vehicles at critical points such as intersections and highway entries.¹ Via an intelligent dissemination of road information (e.g., real-time traffic congestion, high-speed tolling, or surface condition) to vehicles in the vicinity of the subjected sites, collisions among vehicles can be prevented, and on-road vehicular safety can be accordingly enhanced.

To facilitate safety applications in VANETs, intraplatoon cooperative collision-avoidance (CCA) techniques have significantly evolved recently. With CCA systems, the number of car accidents and the associated damage can be significantly reduced. The prime reason for deploying CCA systems in VANETs is the substantially long reaction time (i.e., 0.75–1.5 s [2]) of any human driver to apply the brake following an emergency scenario. The potential damage inflicted by such a long reaction time of an individual driver is, indeed, remarkably high in case of a close formation of vehicles, which travel at high speeds. Instead of having drivers to traditionally react to the brake lights of vehicles immediately ahead, CCA systems enable vehicles to promptly react in emergency situations via a fast dissemination of warning messages to the vehicles in the platoon. However, the effectiveness of a given CCA system depends not only on the reliability of the circulated warning messages but on the specific nature of the emergency situation at hand as well. To this end, the underlying medium-access control (MAC) protocols of the concerned VANET need to make sure that the medium-access delay associated with each vehicle, under an emergency event, remains as short as possible. Driven by this need, we envision an effective CCA scheme, which takes into account a risk-aware MAC protocol, which we have specifically tailored for VANET environments. Furthermore, we envision clusters of vehicles based on their movement traits, including directional headings and relative velocities, and on the intervehicular distances as well. In a given cluster, each vehicle is assigned an emergency level, which reflects the risk associated with that particular vehicle to fall into an accidental hazard, e.g., collision with the other cars in the platoon. This cluster-based approach also permits us to set the medium-access delay of an individual vehicle as a function of its emergency level. By so doing, the envisioned strategy attempts to provide the drivers of the vehicles with warning messages pertaining to the emergency scenario with

¹An abridged version of this work has appeared in [1].

89 the shortest delivery latencies possible. This feature should
 90 prevent chain collisions or reduce the associated damage. Our
 91 adopted strategy is referred to as the cluster-based risk-aware
 92 CCA (C-RACCA) scheme due to its twofold contributions,
 93 namely, the formation of clusters and the adoption of the risk-
 94 conscious medium-access protocol.

95 The remainder of this paper is organized as follows. Rel-
 96 evant research on MAC protocols in VANET environments
 97 is presented in Section II. The operations of the envisioned
 98 C-RACCA system comprising its clustering mechanism and the
 99 risk-aware MAC protocol are delineated in detail in Section III.
 100 The performance of the C-RACCA system is evaluated in
 101 Section IV, which justifies the simulation setup and provides an
 102 in-depth analysis of the simulation results. Concluding remarks
 103 follow in Section V.

104

II. RELATED WORK

105 VANETs are well characterized for their rapidly and dynam-
 106 ically changing topologies due to the fast motion of vehicles.
 107 Unlike traditional mobile ad hoc networks (MANETs), the
 108 nodes' mobility in VANETs is constrained by predefined roads
 109 and restricted speed limits. Additionally, nodes in VANETs can
 110 be equipped with devices with potentially longer transmission
 111 ranges, rechargeable source of energy, and extensive on-board
 112 storage capacities. Processing power and storage efficiency are,
 113 thus, not the issue in VANETs that they are in MANETs.

114 The work by Little and Agarwal [3] serves as an inspiring one
 115 for utilizing clusters of vehicles in VANETs without the use of
 116 fixed infrastructures (e.g., access points, satellites, and so forth).
 117 The hypothesis of this work states that the vehicles, which travel
 118 along the same directed pathway, can form interconnected
 119 blocks of vehicles. Thus, the notion of cluster of vehicles is
 120 adopted whereby a header and a trailer identify a particular
 121 cluster that is on the move. Little and Agarwal used multihop
 122 routing in these blocks or clusters of vehicles to obtain an opti-
 123 mum propagation rate to disseminate information pertaining to
 124 traffic and road conditions. For this purpose, they characterized
 125 the bounds of information propagation under different traffic
 126 patterns. In addition, by combining delay-tolerant networking
 127 and MANET techniques, they also implemented the safety
 128 information dissemination algorithm as a routing protocol.

129 To inform all the vehicles in a risk area (along a highway)
 130 regarding an emergency scenario (e.g., an accident or an im-
 131 pediment on the road) via alarm broadcasts, a novel com-
 132 munications technique called the intervehicles geocast (IVG)
 133 protocol was proposed [4]. IVG considers a vehicle to be in
 134 the risk area if the accident/obstacle is in front of that vehicle.
 135 Based on the temporal and dynamic attributes of the locations,
 136 speeds (i.e., highway), and driving directions of the vehicles in
 137 the risk zone, IVG defines multicast groups of these vehicles.
 138 Since IVG does not maintain neighboring cars' list at each
 139 vehicle, the overall signaling overhead is reduced, which saves
 140 precious bandwidth to disseminate the actual warning messages
 141 according to a defer time algorithm. In addition, relays are
 142 deployed dynamically in a distributed manner (in each driving
 143 direction) that rebroadcasts the warning messages to ensure
 144 their delivery to the vehicles in the risk area.

The broadcast storm problem, in which there is a high level of
 contention and collisions at the MAC level due to an excessive
 number of broadcast packets, is presented in the VANET con-
 text in [5]. The serious nature of the broadcast storm problem
 is illustrated in a case study of four-lane highway scenario.
 This work proposes three lightweight broadcast techniques to
 mitigate the broadcast storms by reducing redundant broadcasts
 and packet loss ratio on a well-connected vehicular network.
 This work, however, does not consider addressing the broadcast
 storm issue at the MAC layer (i.e., the real source of the
 problem), which may be able to mitigate the problem more
 effectively.

To prevent accidents that may occur due to late detection of
 distant/roadway obstacles, Gallagher *et al.* [6] emphasized the
 need for longer range vehicular safety systems that are capable
 of real-time emergency detection. To this end, they investigated
 the applicability of DSRC resources to improve the efficiency
 and reliability of vehicle safety communications. This work
 specifically partitions crucial safety messages and the nonsafety
 ones. The former is termed as "safety-of-life" messages, which
 are assigned the highest priority and transmitted on a dedi-
 cated safety channel. The underlying MAC and physical (PHY)
 layers, guided by the higher layers, enable the awareness and
 separation of safety and nonsafety messages.

In the survey conducted by Hartenstein and Laberteaux [7],
 the parameters that may influence the probability of packet
 reception in VANETs have been pointed out, including ve-
 hicular traffic density, radio channel conditions, transmission
 power, transmission rate, contention window sizes, and the
 prioritization of packets. This work also mentions that for
 packets prioritization in particular, the enhanced distributed
 channel access (EDCA), which is also part of 802.11-2007
 specifications, can be used. Four distinct access categories, each
 with its own channel access queue, are provided in this scheme,
 whereby the interframe space and the contention window size
 can be tailored to the specific needs of the target VANET.
 Indeed, Torrent-Moreno [8] demonstrates that, in contrast with
 the simple carrier sense multiple access (CSMA) scheme, the
 channel access time and probability of packets reception im-
 prove to an extent under EDCA scheme, even in the case of a
 saturated channel.

Sichititu and Kihl [9] survey IVC systems and focus on
 public safety applications toward avoiding accidents and loss
 of lives of the passengers. Their study points out that safety ap-
 plications are inherently delay sensitive, e.g., vehicular warning
 systems to avoid side crashes of cars and trains at crossroads,
 deploying safety equipments such as inflating air bags and
 tightening seat belts, and so forth. The system penetration of
 such applications is, however, subject to determining the zone
 of relevance as accurately as possible. For instance, when an
 accident in the right lane of a highway occurs, it is considered
 in the covered studies to only affect vehicles approaching the
 accident from behind. The survey also describes the available
 communication technologies, focusing on their PHY and MAC
 layers, that may facilitate vehicular communications to dissem-
 inate emergency messages. The studied protocols that are con-
 sidered to be suited for intervehicle emergency communications
 systems include IEEE 802.11 and its DSRC standard, Bluetooth

203 (standardized within IEEE 802.15.1), and cellular models such
 204 as the global system for mobile communications/general packet
 205 radio service and third-generation (3G) systems like the uni-
 206 versal mobile telecommunications system (UMTS), the UMTS
 207 terrestrial radio access network, and so on.

208 Toor *et al.* [10] suggest that three difficulties arise in the
 209 PHY/MAC layer in VANETs. The first problem involves shar-
 210 ing the radio medium to effect robust transmission among
 211 the vehicles. The second problem consists of traffic jams or
 212 postaccidental scenarios whereby the target VANET exhibits
 213 a rather high density of vehicular nodes. The third and most
 214 significant problem identified in this work is the support of
 215 adequate emergency applications to guarantee quality of service
 216 (QoS) in wireless environments. The study elucidates that there
 217 exist two main approaches for sharing the medium that may
 218 be used for vehicular communications, namely 1) the CSMA-
 219 like random scheme and 2) the time-division multiple-access
 220 (TDMA)-like controlled scheme. A prime example of the
 221 former approach is IEEE 802.11, which is stated to be the
 222 most dominant MAC protocol for developing safety applica-
 223 tions for vehicular networks. As examples of the latter, the
 224 study refers to a number of other technologies derived from
 225 3G telecommunications systems based upon variations of the
 226 pure ALOHA protocol [11] such as the slotted ALOHA [12]
 227 and reliable reservation ALOHA (RR-ALOHA) [13] access
 228 schemes. Recent works such as [14] have also considered QoS
 229 issues in VANETs.

230 As stated earlier, a class of unique applications has been
 231 devised for VANETs. For each application, different tech-
 232 niques have been proposed. From the observation that routing
 233 protocols originally designed for MANET networks may be
 234 suitable only for delay-tolerant content-delivery applications
 235 (e.g., in-vehicle Internet) [15], the work in [17] proposed a
 236 set of context-aware broadcast-oriented forwarding protocols
 237 for delay-sensitive safety applications in VANETs (e.g., CCA
 238 systems). The packet-forwarding operation can be selective
 239 and based on the geographical locations and the moving di-
 240 rections of the source and the destination vehicles and the
 241 packet's information content. Furthermore, mobility-oriented
 242 schemes such as "Mobility-centric approach for Data Dissem-
 243 ination in Vehicular networks" (MDDV) [23], which attempts
 244 to address the data delivery problem in a partitioned and
 245 highly mobile VANET topology, integrates the following three
 246 data-forwarding techniques: 1) the opportunistic-based scheme;
 247 2) the trajectory-based scheme; and 3) the geographical for-
 248 warding scheme. The former refers to the fact that vehicle
 249 movements create the opportunity to pass messages and de-
 250 termine which vehicle to transmit/buffer/drop a message and
 251 when. The trajectory forwarding implies that the information
 252 is being propagated from the source to the destination. The
 253 geographical forwarding, on the other hand, means that the
 254 message is conveyed geographically closer to the destination
 255 along the source-to-destination trajectory. Localized algorithms
 256 specifically designed for vehicles are developed to exploit
 257 these data-forwarding schemes. By allowing multiple vehi-
 258 cles to actively propagate a given message, MDDV improves
 259 message-delivery reliability. While the aforementioned packet-
 260 forwarding protocols can reduce the number of signaling mes-

sages in a VANET, ensuring prompt delivery of critical warning
 261 messages is also crucial for CCA systems. For this purpose, 262
 there is a need to develop adequate MAC protocols. 263

264 Many of the MAC protocols that have evolved over the years
 265 are, however, not applicable to VANET environments. Among 265
 the contemporary MAC protocols, the IEEE 802.11 MAC spec- 266
 267 ification is considered to be the leading choice among VANET
 268 designers as a means to provide safety applications [25]. The 268
 MAC protocol of IEEE 802.11 consists of a number of so- 269
 270 phisticated mechanisms that rely on soft handshaking involving
 271 a number of signaling messages (e.g., request-to-send and
 272 clear-to-send messages) exchanged between the sender and the
 273 receiver. These mechanisms include the following: 1) CSMA
 274 with collision avoidance (CSMA/CA); 2) multiple access with
 275 collision avoidance (MACA); and 3) MACA for wireless with
 276 distributed coordinated function mode. More tailored MAC
 277 protocols for VANET environments are also evolving, as shown
 278 in the study conducted by Adachi *et al.* [16]. In addition, 278
 the following two techniques have evolved into safety-critical
 279 application domains such as CCA: 1) data prioritization [17], 280
 [26] and 2) vehicle prioritization. We focus on the latter in
 281 this paper whereby the emergency level associated with each
 282 vehicle in the considered VANET is taken into account to
 283 prioritize the vehicle. Intuitively, vehicles with high emergency
 284 levels should be always granted prompt access to the medium. 285

286 Provisioning security for protecting the vehicular positions in
 a VANET is also emerging as an active area of research. For ex- 287
 ample, Yan *et al.* [28] presented a novel approach that employs 288
 an on-board radar at each vehicle to detect neighboring vehicles 289
 and to confirm their announced coordinates. This notion of 290
 local security (i.e., specific to individual vehicles) is extended to 291
 achieve global security by using the following two techniques: 292
 1) a preset position-based groups to form a communication 293
 network and 2) a dynamic challenging scheme to confirm the 294
 coordinate information sent by remote vehicles. Although the 295
 scope of our work in this paper does not cover these security 296
 aspects, we feel the importance to incorporate such safeguards 297
 to securely disseminate safety information/warning messages 298
 in VANETs in the future. 299

III. CLUSTER-BASED RISK-AWARE COOPERATIVE COLLISION-AVOIDANCE SYSTEM 300 301

302 In this section, we initially provide a brief overview of
 the functionality of the traditional CCA system proposed by 303
 Biswas *et al.* [17] and point out its shortcomings. We then 304
 propose our C-RACCA system, which consists of adequate 305
 solutions to address these issues, namely, a dynamic clustering 306
 procedure to formulate clusters of vehicles, followed by a 307
 uniquely designed risk-aware MAC protocol. 308

A. Shortcomings of the Traditional CCA Systems 309

310 In traditional CCA systems [17], upon an emergency situ-
 ation, a vehicle in the considered platoon dispatches warning 311
 messages to all other vehicles behind it. A recipient takes 312
 into account the direction of the warning message arrival with 313
 respect to its directional bearing and decides whether to pass 314

315 the message to other vehicles or not. Indeed, the message
 316 will be ignored if it comes from behind. To ensure a platoon-
 317 wide coverage, the message is transmitted over multiple hops.
 318 However, this approach leads to the following two problems:
 319 1) generation of a large number of messages, which literally
 320 flood the VANET, and 2) generation of redundant messages
 321 (originated from different vehicles) pertaining to the same
 322 emergency event. Consequently, message collisions are more
 323 likely to occur in the access medium with the increasing number
 324 of vehicles in the platoon. In addition, this naive approach
 325 of relaying the emergency message contributes to cumulative
 326 communication latencies, which, in turn, lead to a substantially
 327 high delay in delivering the warning message from the platoon
 328 front to the vehicles located at the rear of the platoon formation.
 329 To make matters even worse, in the case of multiple failed
 330 message retransmissions owing to excessive MAC collisions,
 331 this message-delivery latency increases further. To overcome
 332 these shortcomings of the existing CCA systems, we offer a
 333 novel approach that dynamically forms clusters of the vehicles
 334 in a platoon.

335 B. Dynamic Clustering of Vehicles

336 Prior to a detailed description of the envisioned clustering
 337 mechanism, it is essential to point out a number of assumptions
 338 regarding the considered VANET environment, as listed in the
 339 following.

- 340 1) To accurately estimate the current geographical location,
 341 each vehicle in the platoon consists of global positioning
 342 systems (GPSs) or similar tracking modules. It should
 343 be noted that the knowledge pertaining to the real-
 344 time coordinates of the vehicular nodes is an assump-
 345 tion made by most protocols and applications. Indeed,
 346 this is a reasonable enough assumption pointed out by
 347 Boukerche *et al.* [18] because the GPS receivers can
 348 easily be deployed on vehicles. However, as VANETs
 349 are evolving into more critical areas and becoming more
 350 reliant on localization systems, there may be certain
 351 undesired problems in the availability of GPS in certain
 352 scenarios (e.g., when the vehicles enter zones where GPS
 353 signals may not be detected, such as inside tunnels, under-
 354 ground parking, and so forth). Indeed, there exist several
 355 localization techniques, such as dead reckoning [19], cel-
 356 lular localization [21], and image/video localization [22],
 357 that may be used in VANETs so that this GPS limitation
 358 may be overcome. In addition, GEOCAST [20], which is
 359 one of our earlier developed protocols, may be used so
 360 that it is still possible to support some vehicles, which
 361 have lost GPS signals, or do not have GPS on board, to
 362 learn from the other vehicles and position themselves.
- 363 2) To facilitate communications, two distinct wireless chan-
 364 nels are considered to exchange signaling messages to
 365 formulate vehicles' clusters and to issue/forward warning
 366 messages, respectively.
- 367 3) Each vehicle is assumed to be capable of estimating its
 368 relative velocity with respect to neighboring vehicles. In
 369 addition, it is also considered to be able to compute, via
 370 adequately deployed sensors, intervehicular distances.

- 4) When a vehicle receives a warning message, it can esti- 371
 mate the direction of the message arrival, i.e., whether the 372
 received warning originated from a vehicle from the front 373
 or the rear. 374
- 5) Each vehicle is considered to have knowledge on its 375
 maximum wireless transmission range, which is denoted 376
 by T_r . A vehicle constantly uses this parameter to update 377
 its current transmission range R in the following manner: 378

$$R = T_r \cdot (1 - \epsilon), \quad 0 < \epsilon \leq 1 \quad (1)$$

where ϵ refers to the wireless channel fading conditions 379
 at the current position. Equation (1) is used for simple 380
 estimation of the practically possible transmission range 381
 from the given surrounding conditions that affect the 382
 maximum transmission range of the vehicle. To compute 383
 this, a simple parameter ϵ is used, which reflects the 384
 surrounding conditions. If the vehicle is currently moving 385
 in the downtown, then its transmission range will be 386
 lower than the maximum possible one. Because, there 387
 will be many obstacles (e.g., high-rise buildings, indus- 388
 tries, and other installations), which will interfere with 389
 the vehicle's wireless signal. To reflect this situation, ϵ in 390
 (1) is set to a high value in a downtown scenario. On the 391
 other hand, when a car is moving in the suburbs, there 392
 are fewer obstacles affecting the vehicle's transmitted 393
 signals. Therefore, in such a scenario, low values of ϵ are 394
 used to illustrate that the vehicle may use a transmission 395
 range that is closer to the maximum possible one. GPS or 396
 other positioning systems (e.g., Galileo) are used to ob- 397
 tain the terrain information so that the appropriate values 398
 of ϵ in a given location can be appropriately estimated. 399

Additionally, we consider, for clustering purposes, a platoon 400
 of vehicles, which travel along the same road toward the same 401
 direction. Consistent with previous work in this domain [15], 402
 the envisioned grouping of vehicles is, thus, based upon their 403
 movement directions. Directional-antenna-based MAC proto- 404
 cols [27] may be utilized to group the vehicles more accurately, 405
 whereby the transmission range of vehicles is split into M 406
 transmission angles of equal degrees ($360/M$). By assigning 407
 each transmission angle to a unique vehicle group, M groups 408
 can thus be formulated. 409

Similar in spirit with the assumptions in [15] and [27], our 410
 approach considers, in forming a cluster, only the vehicles that 411
 belong to the same group in terms of moving on the same road 412
 toward the same direction. Fig. 1 portrays an example of three 413
 such clusters. As depicted in this figure, a vehicle may act as a 414
 special node, i.e., as a cluster head (CH) or a subcluster head 415
 (SCH), or may merely drive as an ordinary vehicle (OV). In 416
 case of forming a CH, the vehicles are voluntarily required to 417
 consistently advertise for the cluster while maintaining and up- 418
 dating their respective cluster tables. On the other hand, the first 419
 SCH node is selected as the last vehicle that is reachable by the 420
 CH. Indeed, the SCH node may be used to define a subsequent 421
 SCH entity (i.e., the last vehicle reachable from this SCH node), 422
 and so forth. SCH nodes are in charge of relaying packets (e.g., 423
 emergency warning messages) from either a CH or from SCHs 424
 in front to other vehicles within the same cluster that lie outside 425

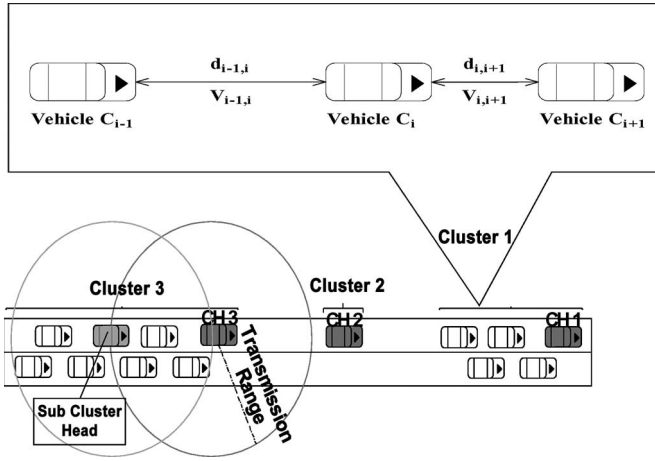


Fig. 1. Example of three clusters.

426 the CH's (or the front SCH's) transmission range. In addition, a
 427 SCH also aggregates information from OV's within its reach and
 428 relays them to the CHs/SCHs in front. It should be noted that
 429 it is a rare case to have a cluster containing a large number of
 430 SCHs. In such case, the cluster size will be significantly large,
 431 and vehicles will be more likely moving at very low speeds.
 432 Thus, chain collisions will not happen in such case. Finally,
 433 OV's comprise the ordinary members in the cluster that perform
 434 no specific task.

435 As demonstrated in the example in Fig. 1, C_i refers to the
 436 identification (ID) of vehicle i . For simplicity, we denote C_{i-1}
 437 and C_{i+1} as the vehicles ahead of and immediately behind C_i ,
 438 respectively. The transmission range of the former (provided
 439 that it exists) reaches C_i . On the other hand, the latter is
 440 reachable by C_i . The distance between a pair of vehicles C_j
 441 and C_k is denoted by $d_{j,k}$. V_j and $V_{j,k}$ refer to vehicle C_j 's
 442 actual velocity and the relative velocity with respect to vehicle
 443 C_k , respectively. Therefore, the magnitude of $V_{j,k}$ is assumed
 444 to be the same as that of $V_{k,j}$. Additional notations, which are
 445 used in the clustering operation, are listed as follows:

- 446 1) τ_j^a : time required for a vehicle C_j to reach vehicle C_{j-1}
 447 immediately ahead of it (i.e., $\tau_j^a = d_{j-1,j}/V_{j-1,j}$);
- 448 2) τ_j^b : time required for a vehicle C_j to be reached by vehicle
 449 C_{j+1} right behind it (i.e., $\tau_j^b = d_{j,j+1}/V_{j,j+1}$);
- 450 3) ϕ_j : set of CHs or SCHs in front of vehicle C_j ; this set
 451 also belongs to C_j 's group;
- 452 4) ϕ_j^{CH} : the closest CH or SCH ($\in \phi_j$) in front of
 453 vehicle C_j ;
- 454 5) ψ_j : set of CHs or SCHs behind vehicle C_j ; this set also
 455 belongs to C_j 's group;
- 456 6) ψ_j^{CH} : the closest CH or SCH ($\in \psi_j$) behind vehicle C_j ;
- 457 7) a_e and a_r : emergency deceleration and regular deceleration,
 458 respectively, which indicate the occurrence of an
 459 emergency event to trigger the transmission of critical
 460 warning messages;
- 461 8) δ : the average reaction time of individual drivers ($0.75 \leq$
 462 $\delta \leq 1.5$ s).

463 For each vehicle C_i and its immediately following vehicle
 464 C_{i+1} , we consider that no collision will occur between these
 465 two vehicles, and therefore, they are safe, provided that their

distance $d_{i,i+1}$ satisfies the following condition for $\Gamma_{i,i+1}$ (i.e., 466
 $\overline{\Gamma_{i,i+1}}$ denotes the negation of the condition): 467

$$\Gamma_{i,i+1} \Leftrightarrow d_{i,i+1} > \text{Min} \left(d_{max}, \alpha \cdot \left(V_{i+1} \cdot \delta + \frac{V_{i+1}^2}{2a_r} - \frac{V_i^2}{2a_e} \right) \right) \quad (2)$$

where α represents a tolerance factor. In addition, d_{max} denotes 468
 a safety distance in which if two vehicles are distant, no 469
 collision will occur between the two vehicles, regardless of 470
 the vehicles' velocities (e.g., in case of a maximum velocity 471
 $V_{max} = 180$ km/h, $d_{max} = V_{max} \cdot 1.5$ s = 75 m). It should be 472
 noted that the direction of the vehicles is not included in (2) 473
 since we consider the vehicles to be traveling along the same 474
 direction in the same lane. 475

Using the above notations, for any vehicle C_i , we have the 476
 following lemma: 477

$$\exists C_{i-1} \Leftrightarrow \phi_i \neq \emptyset \quad (3)$$

$$\exists C_{i+1} \Leftrightarrow \psi_i \neq \emptyset. \quad (4)$$

The proof of the lemma is trivial. 478

Three specific scenarios pertaining to a vehicle may exist in 479
 the envisioned clustering operation. A vehicle may be in one of 480
 the following three states. 481

- 1) It starts its engine and gets on a road. 482
- 2) It decides to travel in a different direction. Consequently, 483
 it leaves its old group G_o and joins a new group of 484
 vehicles, which is denoted by G_n . 485
- 3) It continues to travel on the same road without changing 486
 its direction. However, it increases or decreases its travel- 487
 ing speed. 488

In the remainder of this subsection, we describe the clus- 489
 tering mechanism in detail by focusing on each of the above 490
 scenarios. 491

1) *Joining a Group for the First Time*: A vehicle C_i , after it 492
 gets on a road, initially broadcasts a CH solicitation message 493
 to the neighboring vehicles, which are assumed to belong 494
 to group G_n . The CH solicitation message queries the other 495
 vehicles regarding the CH of G_n . Meanwhile, C_i also initiates 496
 a timer θ . The following two cases exist: 1) C_i receives no 497
 response, or 2) C_i receives at least one affirmative response 498
 to its initial query prior to expiration of θ . In the former case, 499
 where ($\phi_i = \psi_i = \emptyset$), C_i decides to assume the role of CH 500
 in G_n and starts constructing its own cluster. In the latter 501
 case, C_i needs to take into consideration the responses from 502
 other CH(s). At first, C_i verifies if any CH ahead of it has 503
 also transmitted a CH advertisement message. Otherwise, if 504
 ($\phi_i = \emptyset$), from the fact that $\psi_i \neq \emptyset$, C_i checks whether it 505
 maintains long enough distance ($d_{i,i+1}$) with C_{i+1} , which im- 506
 mediately follows it from behind. This verification is required 507
 to ascertain the safety condition ($\Gamma_{i,i+1}$) described earlier. 508
 If ($\Gamma_{i,i+1}$) holds, C_i constructs its own cluster and declares 509
 itself as the CH of this newly formed cluster. Otherwise (i.e., 510
 if $\overline{\Gamma_{i,i+1}}$), C_i takes over, from ψ_i^{CH} , the CH behind it by 511
 designating itself as the new CH (i.e., $C_i = \phi_{i+1}^{CH}$). 512

On the other hand, if C_i obtains a CH advertisement message 513
 from at least one CH ahead of it (i.e., $\phi_i \neq \emptyset$), it verifies whether 514

TABLE I
ALL POSSIBLE CASES FOR A VEHICLE C_i JOINING FOR THE FIRST TIME A GIVEN GROUP

$\phi_i = \emptyset$			$\phi_i \neq \emptyset$		
$\psi_i = \emptyset$	$\psi_i \neq \emptyset$		$\Gamma_{i,i-1}$		$\Gamma_{i,i-1}$
Form own cluster	$\Gamma_{i,i+1}$	$\Gamma_{i,i+1}$	Form own cluster	$\Gamma_{i,i+1}$	Join ϕ_i^{CH}
	Form own cluster	Take authority of ψ_i^{CH}		Form own cluster	

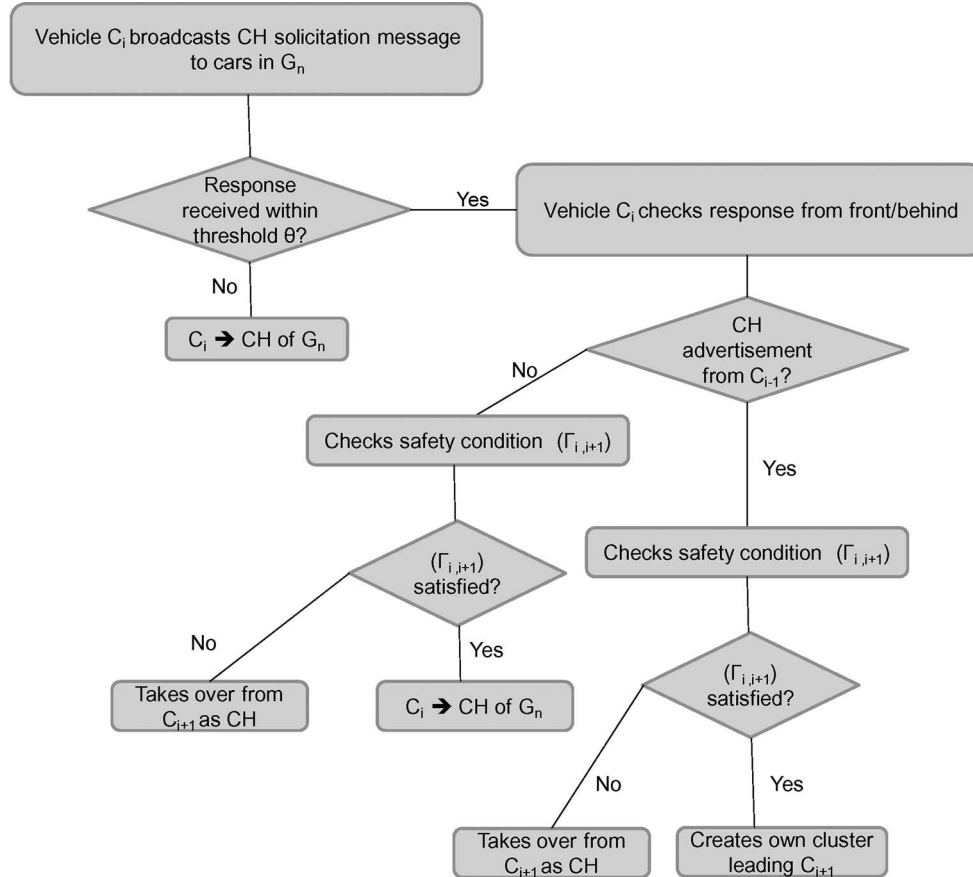


Fig. 2. Steps required for a vehicle to join a group for the first time.

515 the distance to the vehicle immediately ahead of it (C_{i-1})
516 and belonging to the cluster CH is sufficiently large to avoid
517 collision with C_{i-1} . C_i constructs its own cluster by designating
518 itself as the CH, provided that 1) the condition $\Gamma_{i,i-1}$ holds and
519 2) that no vehicle follows it from behind ($\psi_i = \emptyset$). If ($\psi_i \neq \emptyset$),
520 the vehicle will check its distance to the vehicle right behind it
521 and behave in a way similar to the case when ($\phi_i = \emptyset, \psi_i \neq \emptyset$).
522 On the other hand, if the condition $\bar{\Gamma}_{i,i-1}$ persists, C_i is required
523 to join the cluster formed by ϕ_i^{CH} . Table I summarizes all the
524 aforementioned cases. The whole process of joining a group for
525 the first time is illustrated in Fig. 2.

526 A vehicle C_i , which desires to join a given cluster, issues a
527 self notification (SN) message that contains the vehicle's ID,
528 current location, and transmission range to the concerned CH.
529 Upon receiving the SN, the CH treats it as a solicitation request
530 from C_i to join the cluster. The CH then adds C_i into its cluster
531 table and informs the rest of the cluster members via an updated
532 cluster advertisement (CA) message, which contains the IDs
533 of all the involved entities including the cluster, the CH, the

SCH(s), and the OV(s). In the case that a new vehicle emerges as
534 a new CH in the considered cluster, the previous CH needs to
535 transfer the most recently updated cluster table to the new CH,
536 which, in turn, broadcasts an updated CA packet to the cluster
537 members to inform them regarding the changes. 538

2) *Departure From a Group and Joining a New One*: As
539 mentioned earlier, the second scenario consists of a moving
540 vehicle C_i that changes its direction, which results in its de-
541 parture from its old group G_o to a new group G_n . C_i , at first,
542 informs G_n about the departure event. Upon joining G_n , C_i
543 either forms its own cluster or joins a preexisting one following
544 the previously described steps in Section III-A1. 545 AQ1

The departure of C_i from G_o may yield three distinct cases,
546 namely, whether C_i was the CH, a SCH, or merely an OV in
547 G_o . These three cases are depicted in Fig. 3 and are delineated
548 as follows. 549

- 1) *If C_i is an OV in G_o* : In this case, departure operation of
550 C_i from G_o is trivial since it only requires notifying either
551 the CH (denoted by CH_{G_o}) directly or the corresponding
552

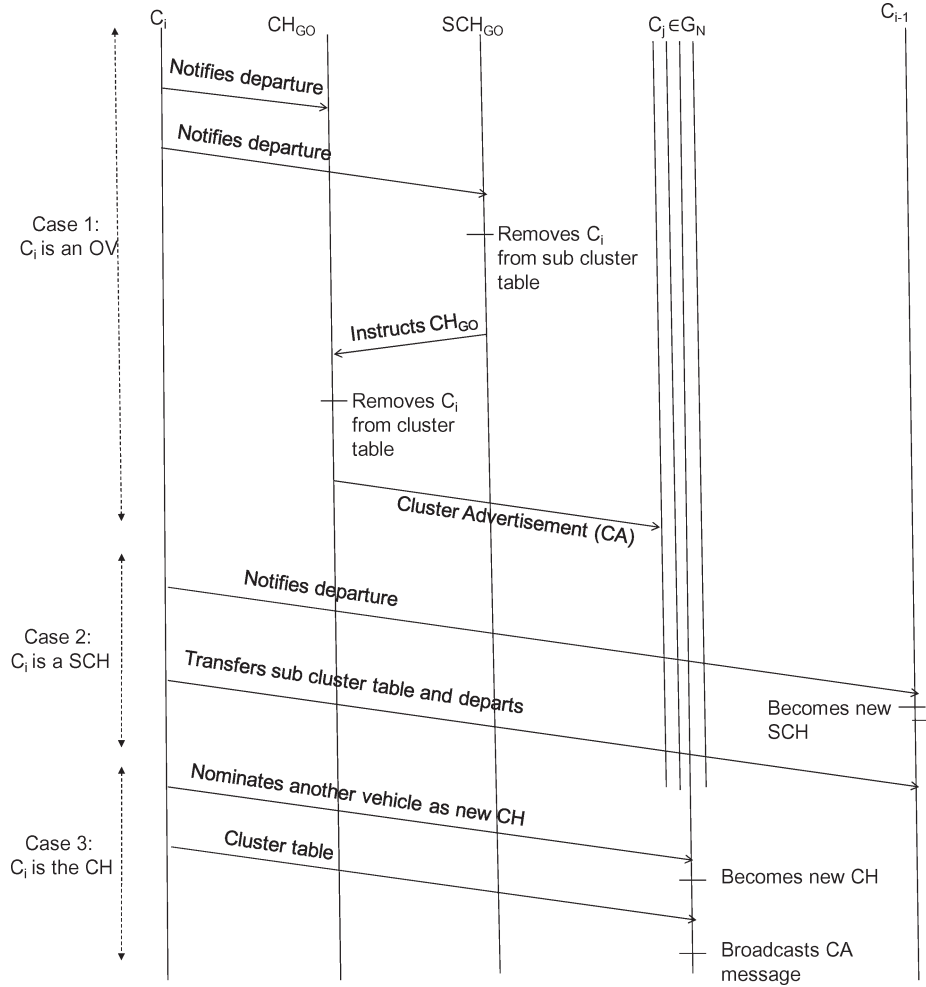


Fig. 3. Timeline diagram illustrating the departure event of a vehicle from a group.

553 SCH (i.e., SCH_{G_o}) similarly. In latter case, SCH_{G_o} first
 554 removes C_i from its subcluster table and instructs CH_{G_o}
 555 about the event that prompts CH_{G_o} , in its own turn,
 556 to delete C_i 's entry from its cluster table. Finally, CH_{G_o}
 557 issues an updated CA message to inform the rest of the
 558 members that C_i is no longer with G_o .

559 2) If C_i is a SCH in G_o : C_i , in this scenario, will assign
 560 C_{i-1} in G_o to assume the responsibility of the new SCH.
 561 In addition, C_i also transfers the subcluster table to C_{i-1}
 562 before departing G_o .

563 3) If C_i is a CH in G_o : This scenario requires C_i to assign
 564 the role of the new CH to another cluster member, which
 565 it deems most appropriate. In addition, C_i also transfers
 566 the cluster table to the new CH prior to its departure from
 567 G_o . The new CH notifies the rest of the cluster members
 568 regarding the change via an updated CA message.

569 Fig. 4 depicts a scenario whereby a vehicle A, with a trans-
 570 mission range T_A and speeding at a velocity V_A , turns onto a
 571 new street inclined by an angle α , while vehicle C, which is
 572 immediately ahead of it, and vehicle B, which is immediately
 573 behind it, continue moving straight along the same road at ve-
 574 locities V_C and V_B , respectively. Fig. 5 demonstrates the results
 575 obtained from numerical analysis that there is largely suffi-
 576 cient time for vehicle A to communicate with both vehicles C

$$\begin{aligned} (x_C, y_C) &= (d_{B,A} + d_{A,C} + tV_C, 0) \\ (x_A, y_A) &= (d_{B,A} + tV_A \cos \alpha, tV_A \sin \alpha) \\ (x_B, y_B) &= (tV_B, 0) \end{aligned}$$

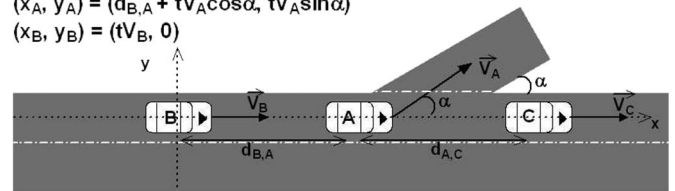


Fig. 4. Scenario showing a vehicle A turning onto a new street inclined by an angle α , while vehicles B and C continue moving straight on the same road.

and B in the case of the following two different scenarios: 1) a 577
 highway scenario where vehicles B and C speed at 120 km/h, 578
 and vehicle A reduces its speed to 60 km/h upon turning onto 579
 the new road and 2) an urban scenario where vehicles B and 580
 C move at 60 km/h, and vehicle A turns at a speed equal to 581
 30 km/h. The transmission range of vehicle A is set to 300 and 582
 150 m in the highway and urban scenarios, respectively. Fig. 6 583
 (derived from analytical computations) shows the time required 584
 to join a cluster in an urban and a highway scenario for different 585
 transmission ranges of vehicles. The figure clearly indicates that 586
 the time required for a vehicle to join a cluster is short in both 587
 scenarios and can be easily accommodated by the connectivity 588
 time shown in Fig. 5. 589

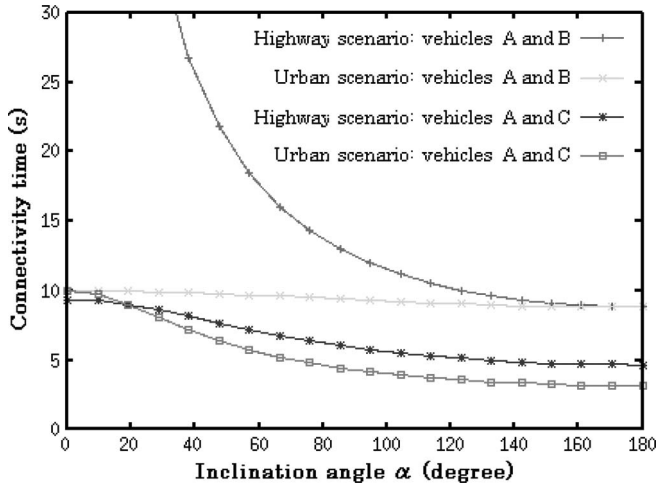


Fig. 5. Connectivity time for a vehicle, turning onto a new street inclined by an angle α , with vehicles right behind it and immediately ahead of it ($d_{B,A} = d_{A,C} = 15$ m).

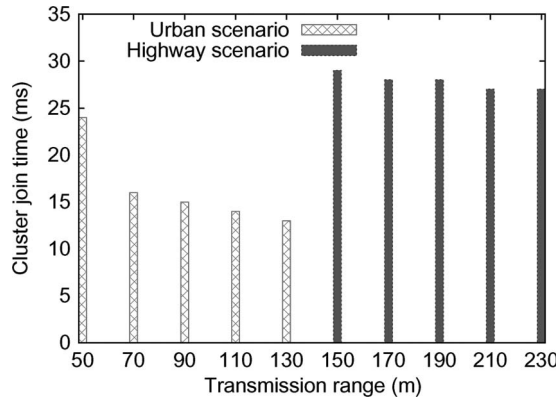


Fig. 6. Time required to join a cluster in an urban and a highway scenario, respectively.

590 3) *Intercluster Interactions Within a Particular Group*: In
591 a given group, the envisioned approach permits flexibility in
592 forming and interacting among clusters belonging to the same
593 group. For instance, a cluster may be split into two parts under
594 certain conditions. The reverse may also be possible, whereby
595 two clusters may merge into a single new cluster.

596 A particular cluster may be divided into two different clus-
597 ters, provided that each of the two adjacent vehicles, which are
598 denoted by C_i and C_{i+1} (both the vehicles are members of the
599 same cluster) continues to travel at a relative speed $V_{i,i+1}$ until
600 the intervehicular space $d_{i,i+1}$ satisfies the condition $\Gamma_{i,i+1}$.
601 When this condition persists, C_{i+1} becomes the CH in one
602 part of the former clusters containing the vehicles following
603 C_{i+1} from behind. On the other hand, C_i joins another part
604 of the previous cluster (consisting in vehicles C_i and beyond)
605 as an OV.

606 Two existing clusters may be allowed to merge and evolve as
607 a single one, provided that the distance between the CH of one
608 of the two clusters (denoted by C_l) and the last vehicle C_k in
609 the other cluster becomes so short that the condition $\bar{\Gamma}_{k,l}$ arises
610 and holds. In this new cluster, C_l will handle the cluster table
611 of the former cluster (i.e., to which C_k previously belonged).

C_l then broadcasts an updated CA message to all the members
612 to inform them regarding this change. 613

614 Conducting the aforementioned dynamic clustering opera-
615 tions, each group of vehicles moving along the same road and in
616 the same direction will be organized into a number of clusters of
617 different sizes and with independent cluster heads (see Fig. 1).
618 The distance between two adjacent clusters is always long
619 enough to avoid collisions between vehicles from both clus-
620 ters. On the other hand, the intervehicle distance between two
621 adjacent vehicles in a given cluster is always shorter than the
622 “safety distance.” Therefore, if a vehicle in a cluster detects an
623 emergency event and applies brakes, collisions among vehicles
624 are likely to happen if drivers do not react promptly. As stated
625 earlier, the exchange of signaling messages for the formation of
626 clusters is performed on a channel different than the one used to
627 transmit warning or emergency messages. MAC collisions due
628 to the transmission of such signals, thus, should not impact the
629 responsiveness of our proposed C-RACCA system. 629

C. Risk-Aware MAC Protocol 630

631 In this section, we describe the envisioned risk-aware MAC
632 protocol. To lay the basis of this work, we consider studying
633 the original MAC protocol in the IEEE 802.11 specifications,
634 owing to its enormous popularity among VANET designers and
635 researchers. For simplicity, the case of a single cluster is consid-
636 ered, whereby the vehicles are indexed based upon their order
637 within the cluster with respect to their movement directions.
638 In other words, without any loss of generality, C_1 refers to the
639 cluster head, C_2 refers to the car immediately behind it, and so
640 forth. In addition, we consider highway platoons for studying
641 the envisaged risk-aware MAC protocol due to the fact that the
642 likelihood of chain vehicle collisions is substantially high in a
643 highway. 643

644 The 802.11 standard currently defines a single MAC that
645 interacts with the following three PHY layers: 1) frequency-
646 hopping spread spectrum with a slot time $\xi = 50 \mu\text{s}$; 2) direct
647 sequence spread spectrum with a slot time equal to $\xi = 20 \mu\text{s}$;
648 and 3) infrared with a slot time equal to $\xi = 8 \mu\text{s}$. The general
649 concept behind the MAC protocol in IEEE 802.11 is that
650 when a mobile node desires to transmit, it first listens to the
651 desired channel. If the channel is idle (no active transmitters),
652 the node is allowed to transmit. If the medium is busy, the
653 node will defer its transmission to a later time and then to a
654 further contention period. To resolve contention issues among
655 different stations that are willing to access the same medium,
656 an exponential back-off mechanism is executed in the IEEE
657 802.11 MAC protocol prior to the calculation of the contention
658 period. This, however, significantly increases the data delivery
659 latency. Consequently, in the case of delay-sensitive safety-
660 critical CCA applications, the effectiveness of the original
661 802.11 MAC protocol decreases substantially. Indeed, high
662 latency in the dissemination of a warning message will lead to
663 scenarios where some vehicles will not have enough time to
664 react, and vehicle collisions become inevitable. To cope with
665 this shortcoming, we envision that the IEEE 802.11 back-off
666 procedure should be substituted by a more suitable mechanism,
667 which takes into account, in the contention window of a given

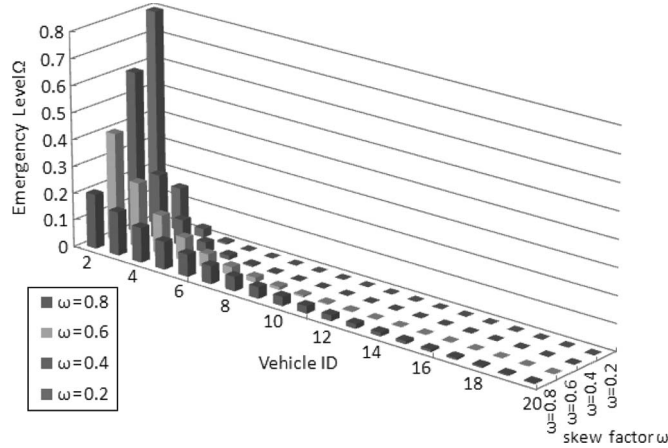


Fig. 7. Emergency level distribution of 20 vehicles for different values of the skew factor.

668 vehicle, its probability to encounter an emergency scenario. To
669 this end, an emergency level for every vehicle (denoted by C_i
670 without any loss of generality) in a particular cluster is defined
671 according to the distribution in

$$\Omega_i = \frac{(1 - \omega)\omega^i}{\omega(1 - \omega^S)}, \quad 1 \leq i \leq S \quad (5)$$

672 where S and ω refer to the cluster size and skew factor,
673 respectively. Fig. 7 demonstrates that setting ω to larger values
674 yields a uniform distribution of the emergency level of vehicles,
675 while assigning ω values close to zero results in a highly skewed
676 distribution.

677 In our envisioned risk-aware MAC protocol, the contention
678 window of a given vehicle C_i is computed based on the follow-
679 ing equation (rather than employing the traditional exponential
680 back-off procedure):

$$CW_i = \sum_{j=1}^k (1 - \Omega_i)^j \cdot cw \cdot \xi \quad (6)$$

681 where k , ξ , and cw denote the number of transmission attempts,
682 the slot time of the used PHY layer, and the window size,
683 respectively. The reason behind computing the vehicles' con-
684 tention windows in this manner is to ascertain that the vehicles
685 with high probability of meeting an emergency situation may
686 enjoy short contention windows. Indeed, in case of multiple
687 failures to transmit the warning message ($k \gg 1$), the con-
688 tention window CW_i will converge to a value equal to ξ/Ω_i .
689 This should ensure smaller latency (after each failed attempt)
690 in the delivery of warning messages for vehicles with high
691 emergency levels Ω_i . Vehicles behind the car that detected the
692 event will then be able to avoid collisions.

693 Equation (6) ensures the system consistency to some extent
694 while adjusting the contention window of all the vehicles
695 belonging to a given cluster. However, there is a further need to
696 ascertain that the contention window is short enough so that the
697 maximum number of imminent collisions among vehicles may
698 be circumvented. To achieve this, the maximum delay, within
699 which a particular vehicle needs to be informed, is computed.
700 In the following, we consider the example of Fig. 1 and assume

that upon an emergency situation, vehicles C_i and C_{i+1} slow
701 down their velocities at rates denoted by a_e and a_r , respectively. 702
The next task is to calculate the maximum latency δ_i since the
703 detection of the emergency event, before which, C_i may be able
704 to notify C_{i+1} (i.e., the vehicle following C_i from behind) of the
705 event to avoid collision. 706

Vehicle C_i will be moving for a time period $\Delta_i = (V_i/a_e)$
707 before it eventually stops. The distances traveled by vehicles
708 C_i and C_{i+1} over Δ_i are denoted by l_i and l_{i+1} , respectively. 709
Equation (7) is used to compute l_i , and (8), shown below, is
710 employed to derive l_{i+1} as follows: 711

$$l_i = \frac{V_i^2}{2 \cdot a_e} \quad (7)$$

$$l_{i+1} = V_{i+1} \cdot \frac{V_i}{a_e} - \frac{a_r}{2} \left(\frac{V_i}{a_e} - \delta_i \right)^2. \quad (8)$$

To avoid collision between C_i and C_{i+1} , the following in-
712 equality should be satisfied by taking into consideration l_i and
713 l_{i+1} , i.e., 714

$$l_{i+1} > l_i + d_{i+1,i} + L_v \quad (9)$$

where L_v is the average vehicle length. This condition can
715 be satisfied if and only if C_{i+1} is notified at maximum δ_i^{\max}
716 time after the event-detection time (i.e., the time when C_i starts
717 decelerating), i.e., 718

$$\delta_i^{\max} = \text{Max} \left(\frac{V_i}{a_e} - \sqrt{\frac{2}{a_r} \cdot \left(\frac{V_i}{a_e} (V_{i+1} - \frac{V_i}{2}) - d_{i+1,i} - L_v \right)}, 0 \right). \quad (10)$$

The collision between C_i and C_{i+1} , however, becomes un-
719 avoidable when ($\delta_i^{\max} = 0$), which compels C_i to continue
720 broadcasting warning messages to all vehicles within its trans-
721 mission range. This provision is required to mitigate further
722 damage inflicted on the platoon by preventing vehicles that are
723 far behind from colliding with one another. Consequently, CW_i
724 (i.e., the contention window for vehicle C_i) is set as follows: 725

$$CW_i = \begin{cases} \sum_{j=0}^k (1 - \Omega_i)^j \cdot cw \cdot \xi, & \text{if } \delta_i^{\max} = 0 \\ \text{Min} \left(\sum_{j=0}^k (1 - \Omega_i)^j \cdot cw \cdot \xi, \delta_i^{\max} \right), & \text{otherwise.} \end{cases} \quad (11)$$

Unless otherwise specified, we set a_e , a_r , and L_v to 8 m/s²,
726 4.9 m/s², and 4 m, respectively. It should be noted that the
727 values of a_e and a_r can be used by the system as an indication
728 for an emergency event (e.g., a_e for cluster head, a_r or above for
729 other cluster members) to trigger the transmission of warning
730 messages. 731

On detecting an emergency event, a vehicle issues a warning
732 message to every member of its cluster (including SCHs) that
733 its transmission range currently covers. An SCH entity forwards
734 this message to each of its subcluster members. It should be
735 noted that a vehicle can safely discard messages originating
736 from vehicles following it from the back. Otherwise (i.e., if the
737 warning message arrives from the front), the recipient vehicle,
738 at once, reacts to it based on the event type included in the
739

740 warning message. If the recipient vehicle encounters redundant
741 warning messages, it takes action based on the first one only
742 and discards the rest of the duplicate copies.

743 IV. PERFORMANCE EVALUATION

744 A. Collision Model

745 Before delving into details of the considered collision model
746 in our simulation, we list a number of important parameters. Let
747 S and L_v denote the size of the considered cluster (where the
748 collisions are simulated) and the average vehicle length, respec-
749 tively. As mentioned earlier, we are more keen on focusing on
750 highway platoon scenarios, whereby the likelihood of collisions
751 among the cluster members is much higher in contrast with ur-
752 ban scenarios. In our simulated highway platoon environment,
753 we consider the most frequent scenario, whereby the CH (i.e.,
754 the vehicle in front of the platoon) identifies an emergency
755 event. When the CH detects an emergency situation at time t_0 ,
756 it slows down at an emergency deceleration a_e . The rest of the
757 vehicles are considered to slow down at a regular deceleration
758 a_r . For the sake of simplicity and without any loss of generality,
759 we further assume that when a vehicle C_i collides with a vehicle
760 C_{i-1} ahead of it, C_i immediately stops. On the other hand,
761 C_{i-1} keeps on traveling without deceleration. Although this
762 particular assumption does not conform to realistic scenarios,
763 it does not change any of the rudimentary observations made so
764 far on the envisioned C-RACCA framework.

765 Let Δt_i represent the latency since the detection of the
766 emergency event until vehicle C_i stops or collides with its
767 preceding vehicle C_{i-1} . The velocities of C_i at the time of
768 the event detection and after Δt_i time are denoted by V_i^o and
769 V_i^s , respectively. The delay incurred in delivering the warning
770 message to C_i is referred to as δ_i . It is worth noting that all
771 vehicles in the cluster (or subcluster) ought to experience sim-
772 ilar δ_i , provided that the broadcast of warning messages by the
773 CH/SCHs and their deliveries at the recipients are successful.
774 As previously evaluated in (7), l_i defines the distance traveled
775 by C_i since the event detection time until the vehicle completely
776 stops or collides with C_{i-1} . The following equations pertain to
777 the CH, i.e., C_1 :

$$\Delta t_1 = \frac{V_1^o}{a_e} \quad (12)$$

$$l_1 = V_1^o \Delta t_1 - \frac{1}{2} a_e \cdot \Delta t_1^2 \quad (13)$$

$$V_1^s = 0. \quad (14)$$

778 For other vehicles, except for the considered CH (i.e., C_i ,
779 $1 < i \leq S$), the conditions for two adjacent vehicles C_i and
780 C_{i-1} not to collide can be obtained in terms of the following
781 equations:

$$\Delta t_i = \frac{V_i^o}{a_r} + \delta_i \quad (15)$$

$$l_i = V_i^o \Delta t_i - \frac{1}{2} a_r \cdot (\Delta t_i - \delta_i)^2 \quad (16)$$

$$V_i^s = 0. \quad (17)$$

TABLE II
SIMULATION PARAMETERS

Factor	Range of values
Propagation model	TwoRayGround
Cluster size, S	20
Vehicle speed, V_i	15 - 45 m/s
Inter-vehicle distance, $d_{i,i+1}$	10 - 30 m
Emergency deceleration, a_e	8 m/s ²
Regular deceleration, a_r	4.9 m/s ²
Driver's reaction time, δ	0.75 - 1.5 s
Transmission range, T_r	150 m
Skew factor, ω	0.8
Average vehicle length, L_v	4 m
Slot time, ξ	50 μ s
Tolerance factor, α	3

On the other hand, in the case that C_i and C_{i-1} collide, the
following two distinct cases may be envisaged.

Case 1) C_i collides while C_{i-1} is still moving.

Case 2) C_{i-1} stops, and then, C_i hits C_{i-1} .

The following inequality should hold in case 2):

$$l_{i-1} + d_{i,i-1} + L_v \leq l_i. \quad (18)$$

In that time, Δt_i , l_i , and V_i^s will be computed as follows:

$$\Delta t_i = \Delta t_{i-1} \quad (19)$$

$$l_i = l_{i-1} + d_{i,i-1} + L_v \quad (20)$$

$$V_i^s = V_i^o - a_r \cdot (\Delta t_{i-1} - \delta_i). \quad (21)$$

For case 1, a time instant t_m should exist when

$$\begin{aligned} \exists t_m \quad & V_i^o(t_m - t_0) - \frac{1}{2} a_r \cdot (t_m - t_0 - \delta_i)^2 \\ & = V_{i-1}^o(t_m - t_0) - \frac{1}{2} \eta \cdot (t_m - t_0 - \delta_{i-1})^2 + L_v \end{aligned} \quad (22)$$

where ($\eta = a_e$) in the case of $i = 2$, or ($\eta = a_r$) for ($3 \leq i \leq S$). During that time, the values of Δt_i , l_i , and V_i^s are computed as follows:

$$\Delta t_i = t_m - t_0 \quad (23)$$

$$l_i = V_i^o(t_m - t_0) - \frac{1}{2} a_e \cdot (t_m - t_0 - \delta_i)^2 \quad (24)$$

$$V_i^s = V_i^o - a_r \cdot (t_m - t_0 - \delta_i). \quad (25)$$

B. Simulation Results

The simulations are conducted using the network simulator (NS-2) [29] based on the collision model delineated in Section IV-A. The simulation parameters are listed in Table II. The transmission ranges of the vehicles and the minimum intervehicular distance are set to 150 and 10 m, respectively. The reason behind these choices is to have at least one SCH in a simulated cluster. As comparison terms, we adopt 1) a CCA system, which is based upon the IEEE MAC protocol that uses the exponential back-off algorithm for calculating contention windows of the vehicles [17] and 2) the absence of a CCA system, whereby the traditional reaction of drivers is considered to be the key factor in avoiding collisions.

We simulate two scenarios. In the first scenario, all vehicles move at a steady speed, and the intervehicle distance is chosen

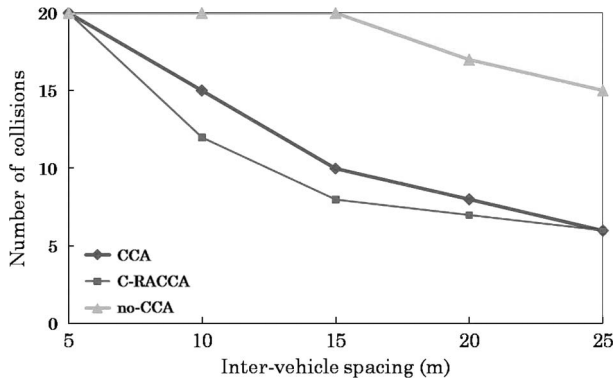


Fig. 8. Number of collided vehicles for different intervehicle distances (scenario 1, vehicle speed = 32 m/s).

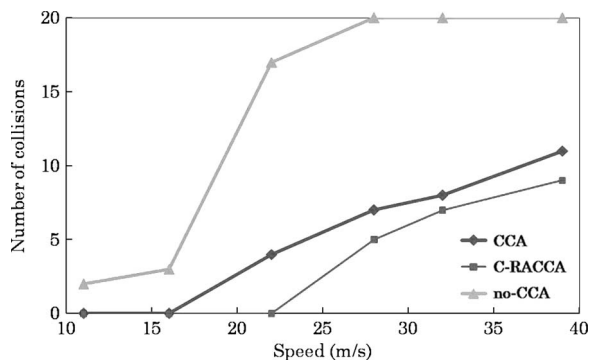


Fig. 9. Number of collided vehicles for different velocities of the cluster head (scenario 2).

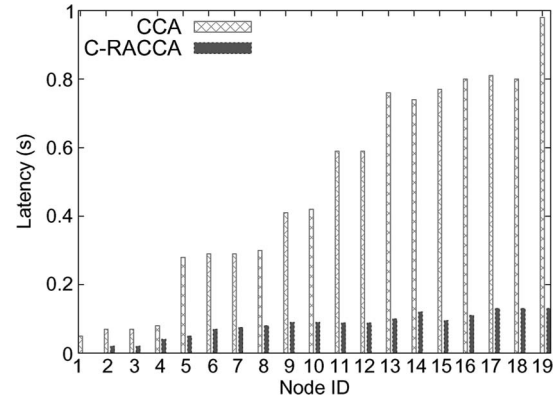


Fig. 10. Warning message delivery latency δ_i for each vehicle C_i (scenario 1, intervehicle distance = 15 m, vehicle speed = 32 m/s).

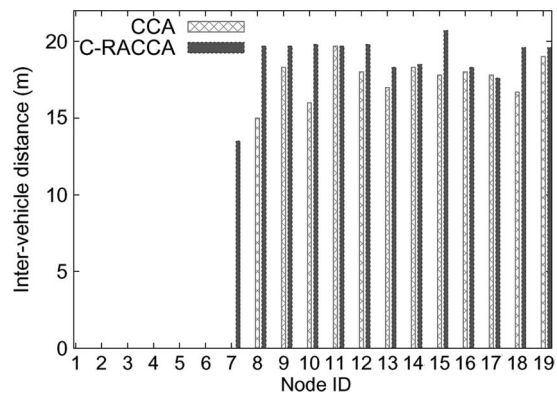


Fig. 11. Relative intervehicle distance $d_{i,i-1}$ after stop (scenario 1, intervehicle distance = 15 m, vehicle speed = 32 m/s).

807 from within the interval [10 m, 30 m]. On the other hand, in the 808 second scenario, the intervehicle distance is arbitrarily selected 809 from within the range [10 m, 30 m] for each pair of collocated 810 vehicles. Each vehicle travels at varying speeds. The CH, which 811 travels at the front of the cluster, moves at a speed that is 812 selected from an interval [22 m/s, 42 m/s]. The velocities of 813 the rest of the cars are carefully chosen not to cause collisions 814 among them. An emergency situation is simulated by having 815 the CH collide with a fixed object that compels the CH to slow 816 down rapidly. Consequently, a number of warning messages are 817 broadcast. The simulation results that we provide here are an 818 average of multiple simulation runs.

819 The number of collisions for various intervehicle distances 820 in the case of the proposed C-RACCA, CCA, and no-CCA 821 systems are plotted in Fig. 8. It can be deduced from this 822 figure that the number of collisions decreases as the intervehicle 823 distance increases significantly. The results demonstrate that the 824 C-RACCA scheme helps save many vehicles from colliding 825 into others. Fig. 9 exhibits a similar performance in the case 826 of scenario 2. As shown in this figure, the reduced number of 827 vehicle collisions achieved by the C-RACCA approach, even 828 when the CH travels at a reasonably high speed, in contrast 829 with CCA and no-CCA systems, is attributable to its ability to 830 swiftly inform the cluster members regarding the emergency 831 situation. Fig. 10 sheds more light on this issue by indicating 832 the fact that vehicles experience significantly high delays in 833 delivering/receiving the warning messages in case of the tra- 834 ditional CCA system. It is worth stressing that these latencies

also include the delay in receiving the first warning message. 835 Indeed, in the proposed system, not all vehicles reforward the 836 warning message. In fact, only the CH and SCHs do so. Fig. 10 837 also demonstrates that in the case of the CCA system, the ten 838 last vehicles at the rear of the cluster experience a relatively 839 longer time to disseminate the warning messages. The reason 840 behind this is the occurrence of multiple MAC collisions owing 841 to the concurrent delivery of warning messages by the first 842 ten cars. On the contrary, the envisioned C-RACCA system 843 ascertains that only the vehicle which encountered the emer- 844 gency situation (e.g., the CH in our simulation scenarios) and/or 845 SCHs are in charge of delivering the warning messages. This 846 provision assists C-RACCA in avoiding message collisions. 847 Consequently, a large number of vehicles receive the warning 848 message in a relatively short latency. Indeed, this enables 849 the vehicles to respond to the emergency situation in a swift 850 manner. 851

The superior performance of the proposed C-RACCA 852 scheme is further evident from Figs. 11 and 12. Fig. 11 exhibits 853 that the relative intervehicle distances (after the vehicles have 854 stopped) are longer in the case of the proposed C-RACCA 855 scheme compared with the other naive approaches. It should be 856 noted that in most cases, a significantly long relative distance 857 between two adjacent vehicles C_i and C_{i+1} suggests that C_{i+1} 858 responded rapidly to the emergency situation to achieve a 859 sufficiently long distance from the vehicle ahead, i.e., C_i . This 860 distance is of high importance in our evaluation due to the 861

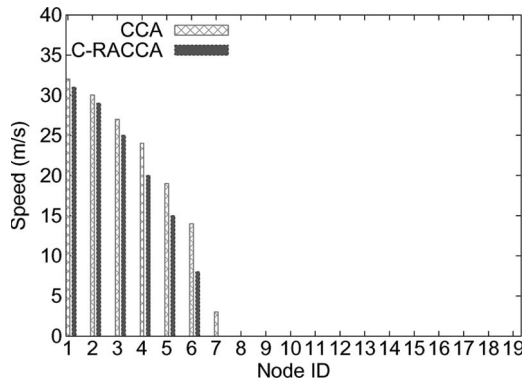


Fig. 12. Relative speed $V_{i,i-1}$ at the time of collision. In the absence of collision, $V_{i,i-1} = 0$ (scenario 1, intervehicle distance = 15 m, vehicle speed = 32 m/s).

862 fact that C_i may explode at the time of collision (e.g., due to
863 fuel leakage and so forth). Additionally, Fig. 12 demonstrates
864 another important feature of the C-RACCA system in terms of
865 the smaller magnitude of the relative velocity of each vehicle at
866 the time of collision. This mitigates the severity and impact of
867 any collision.

868

V. CONCLUSION

869 In this paper, we have proposed an effective collision-
870 avoidance strategy for vehicular networks that we refer to as
871 the C-RACCA system. As it can be inferred from its name,
872 the C-RACCA forms clusters of vehicles that belong to the
873 same group. A number of features pertaining to the movements
874 of the vehicles are taken into account to construct effective
875 clusters. We envisioned a set of mechanisms to enable vehicles
876 to join or depart from a specific cluster. Indeed, the clustering
877 mechanisms lead to various heterogeneous clusters, i.e., multi-
878 ple clusters with different sizes, independent cluster heads, and
879 different numbers of subcluster heads.

880 The other contribution of the C-RACCA system lies in
881 the fact that it enhances existing MAC protocols to ascertain
882 relatively short latencies in disseminating warning messages
883 after an emergency situation is detected. For each vehicle, an
884 emergency level is defined based upon its order in the cluster
885 with respect to the moving direction of the cluster. In the
886 C-RACCA system, the warning message latency is calculated
887 in such a manner that it is inversely proportional to the emer-
888 gency level of the considered vehicle. This reflects the probabil-
889 ity of the vehicle to encounter an emergency event in the cluster.
890 The second rationale lies in the fact that the latency estimation
891 takes into consideration the velocities and intervehicle distances
892 of adjacent vehicles and, thereby, manages to avoid colliding
893 with each other.

894 Various simulations have been conducted in two unique sce-
895 narios to verify and compare the performance of the proposed
896 C-RACCA system with those of the naive CCA and no-CCA
897 approaches. The simulation results clearly exhibit the applica-
898 bility of the C-RACCA approach in VANET environments
899 since it reduces both the number of collisions and the impacts
900 of collisions when they inevitably occur.

901 Admittedly, our work has considered a distribution with a
902 predetermined skew factor (i.e., ω) to estimate the emergency

903 levels of the vehicles that are used to compute the warning mes-
904 sage delivery latency. However, in the future, further investiga-
905 tion regarding any possible correlation between the skew factor
906 and the attributes of a specific cluster (in terms of its average
907 intervehicle distance, average velocity, size, and so forth) is
908 required. The relationship between the transmission ranges of
909 the vehicles in a given cluster and the size of that cluster also
910 needs further investigation. In addition, the impact of chan-
911 nel conditions on the delivery of warning messages and their
912 overall impact on the C-RACCA's performance also deserve
913 further studies. Furthermore, the management of intercluster
914 communications may also open up interesting research scopes.
915 These form some of our future research into this particular area
916 of research.

REFERENCES

- [1] T. Taleb, K. Ooi, and K. Hashimoto, "An efficient collision avoidance strategy for ITS systems," in *Proc. WCNC*, Las Vegas, NV, Mar. 2008, pp. 2212–2217.
- [2] X. Yang, J. Liu, F. Zhao, and N. H. Vaidya, "A vehicle-to-vehicle communication protocol for cooperative collision warning," in *Proc. MOBIQUITOUS*, Boston, MA, Aug. 2004, pp. 114–123.
- [3] T. D. C. Little and A. Agarwal, "An information propagation scheme for VANETs," in *Proc. 8th Intell. Transp. Syst.*, Vienna, Austria, Sep. 2005, pp. 155–160.
- [4] A. Bachir and A. Benslimane, "A multicast protocol in ad hoc networks inter-vehicle," in *Proc. IEEE VTC*, Orlando, FL, Apr. 2003, pp. 2456–2460.
- [5] N. Wisitpongphan, O. K. Tonguz, J. S. Parikh, P. Mudalige, F. Bai, and V. Sadekar, "Broadcast storm mitigation techniques in vehicular ad hoc networks," *IEEE Trans. Wireless Commun.*, vol. 14, no. 6, pp. 84–94, Dec. 2007.
- [6] B. Gallagher, H. Akatsuka, and H. Suzuki, "Wireless communications for vehicle safety: Radio link performance and wireless connectivity methods," *IEEE Veh. Technol. Mag.*, vol. 1, no. 4, pp. 4–24, Dec. 2006.
- [7] H. Hartenstein and K. P. Laberteaux, "A tutorial survey on vehicular ad hoc networks," *IEEE Commun. Mag.*, vol. 46, no. 6, pp. 164–171, Jun. 2008.
- [8] M. Torrent-Moreno, "Inter-vehicle communications: Achieving safety in a distributed wireless environment—Challenges, systems and protocols," Ph.D. dissertation, Univ. Karlsruhe, Karlsruhe, Germany, Jul. 2007.
- [9] M. L. Sichitiu and M. Kihl, "Inter-vehicle communication systems: A survey," *IEEE Commun. Surveys Tuts.*, vol. 10, no. 2, pp. 88–105, Apr. 2008.
- [10] Y. Toor, P. Mühlethaler, A. Laouiti, and A. de La Fortelle, "Vehicle ad hoc networks: Applications and related technical issues," *IEEE Commun. Surveys Tuts.*, vol. 10, no. 3, pp. 74–88, Jul. 2008.
- [11] F. F. Kuo, "The ALOHA system," in *Computer Networks*. Englewood Cliffs, NJ: Prentice-Hall, 1973, pp. 501–518.
- [12] V. Anantharam, "The stability region of the finite-user slotted ALOHA protocol," *IEEE Trans. Inf. Theory*, vol. 37, no. 3, pp. 535–540, May 1991.
- [13] F. Borgonovo, A. Capone, M. Cesana, and L. Fratta, "ADHOC MAC: New MAC architecture for ad hoc networks providing efficient and reliable point-to-point and broadcast services," *Wireless Netw.*, vol. 10, no. 4, pp. 359–366, Jul. 2004.
- [14] J. Zhang, K. H. Liu, and X. Shen, "A novel overlay token ring protocol for inter-vehicle communication," in *Proc. IEEE ICC*, Beijing, China, May 2008, pp. 4904–4909.
- [15] T. Taleb, E. Sakhaee, K. Hashimoto, A. Jamalipour, N. Kato, and Y. Nemoto, "A stable routing protocol to support ITS services in VANET networks," *IEEE Trans. Veh. Technol.*, vol. 56, no. 6, pp. 3337–3347, Nov. 2007.
- [16] T. Adachi, H. Murata, K. Yamamoto, and S. Yoshida, "Study of reservation MAC protocol using receiving status of interfered vehicles for ITS inter-vehicle communications," *IEICE Tech. Rep.*, vol. 108, no. 471, pp. 11–16, Mar. 2009.
- [17] S. Biswas, R. Tatchikou, and F. Dion, "Vehicle-to-vehicle wireless communication protocols for enhancing highway traffic safety," *IEEE Commun. Mag.*, vol. 44, no. 1, pp. 74–82, Jan. 2006.
- [18] A. Boukerche, H. Oliveira, E. F. Nakamura, and A. Loureiro, "Vehicular ad hoc networks: A new challenge for localization-based systems," *Comput. Commun.*, vol. 31, no. 12, pp. 2838–2849, Jul. 2008.

974 [19] T. King, H. Fubler, M. Transier, and W. Effelsberg, "Dead-reckoning for
975 position-based forwarding on highways," in *Proc. 3rd Int. WIT*, Hamburg,
976 Germany, Mar. 2006, pp. 199–204.

977 [20] A. Benslimane and A. Bachir, "Inter-vehicle geocast protocol support-
978 ing non equipped GPS vehicles," in *Proc. Int. Conf. ADHOC-NOW*,
979 Montreal, QC, Canada, Oct. 2003, vol. 2865, pp. 281–286, Lecture Notes
980 Comput. Sci.

981 [21] M. Chen, D. Haehnel, J. Hightower, T. Sohn, A. LaMarca, I. Smith,
982 D. Chmelev, J. Hughes, and F. Potter, "Practical metropolitan-scale
983 positioning for GSM phones," in *Proc. 8th UbiComp*, Orange County,
984 CA, Sep. 2006, pp. 225–242.

985 [22] F. Chausse, J. Laneurit, and R. Chapuis, "Vehicle localization on a dig-
986 ital map using particles filtering," in *Proc. IEEE Intell. Vehicles Symp.*,
987 Las Vegas, NV, Jun. 2005, pp. 243–248.

988 [23] H. Wu, R. Fujimoto, R. Guensler, and M. Hunter, "MDDV: A mobility-
989 centric data dissemination algorithm for vehicular networks," in *Proc.*
990 *1st ACM Workshop Veh. Ad Hoc Netw.*, Philadelphia, PA, Oct. 2004,
991 pp. 47–56.

992 [24] H. Menouar, F. Filali, and M. Lenardi, "A survey and qualitative analy-
993 sis of MAC protocols for vehicular ad hoc networks," *IEEE Wireless*
994 *Commun.*, vol. 13, no. 5, pp. 30–35, Oct. 2006.

995 [25] O. Tickoo and B. Sikdar, "Queueing analysis and delay mitigation in
996 IEEE 802.11 random access MAC-based wireless networks," in *Proc.*
997 *IEEE INFOCOM*, Hong Kong, Mar. 2004, pp. 1404–1413.

998 [26] Standard Specification for Telecommunications and Information Ex-
999 change Between Roadside and Vehicle Systems—5 GHz Band Dedicated
1000 Short Range Communications (DSRC) Medium Access Control (MAC)
1001 and Physical Layer (PHY) Specifications, ASTM E2213-03, Sep. 2003.

1002 [27] Z. Huang, C. Shen, C. Srisathapornphat, and C. Jaikaeo, "A busy tone-
1003 based directional MAC protocol for ad hoc networks," in *Proc. IEEE*
1004 *MILCOM*, Anaheim, CA, Oct. 2002, pp. 1233–1238.

1005 [28] G. Yan, S. Olairu, and M. C. Weigle, "Providing VANET security through
1006 active position detection," *Comput. Commun.*, vol. 31, no. 12, pp. 2883–
1007 2897, Jul. 2008.

1008 [29] Network Simulator—NS-2. [Online]. Available: [http://www.isi.edu/](http://www.isi.edu/nsnam/ns/)
1009 [nsnam/ns/](http://www.isi.edu/nsnam/ns/)



Abderrahim Benslimane (SM'08) received the B.S. 1043
degree from the University of Nancy, Nancy, France, 1044
in 1987 and the Ph.D. and DEA M.S. degrees 1045
from the Franche-Comte University of Besancon, 1046
Besancon, France, in 1993 and 1989, respectively, all 1047
in computer science. He received the HDR degree 1048
(the title to supervise research) from the University 1049
of Cergy-Pontoise, Cergy-Pontoise, France. 1050

He has been a Full Professor of computer science 1051
and engineering with the University of Avignon, 1052
Avignon, France, since September 2001. He has 1053

been an Associate Professor with the University of Technology of Belfort- 1054
Montbéliard, Belfort, France, since September 1994. His research and teaching 1055
interests are in wireless ad hoc and sensor networks. Particularly, he works 1056
on multicast routing, intervehicular communications, quality of service, energy 1057
conservation, localization, intrusion detection, and medium-access control layer 1058
performance evaluation. He was also interested in the specification and verifi- 1059
cation of communication protocols, group communication algorithms, and 1060
multimedia synchronization. He has several refereed international publications 1061
(book, journals, and conferences) in all those domains. 1062

Dr. Benslimane is member of the CA of the IEEE French section, a 1063 AQ2
member of the IEEE Communications Society Communications and Informa- 1064
tion Security Technical Committee, and the Vice President of the IEEE France 1065
student activities section. He has served as a Technical Program Committee 1066
Chair and Cochair and as a member of a number of international conferences. 1067
He has been a reviewer for a great number of journals and national research 1068
projects sponsored by the ANR/Telecom. He is involved in many national and 1069 AQ3
international projects. He is a member of many editorial boards of international 1070
journals. He chairs many IEEE international conferences. He participates in the 1071
Steering and Program Committees of many IEEE international conferences. 1072



Khaled Ben Letaief (S'85–M'86–SM'97–F'03) re- 1073
ceived the B.S. degree with distinction in electrical 1074
engineering from Purdue University, West Lafayette, 1075
IN, in December 1984 and received the M.S. and Ph.D. 1076
degrees in electrical engineering from Purdue Uni- 1077
versity in August 1986 and May 1990, respectively. 1078

From January 1985 and as a Graduate Instructor 1079
with the School of Electrical Engineering, Purdue 1080
University, he taught courses in communications 1081
and electronics. From 1990 to 1993, he was a 1082
faculty member with the University of Melbourne, 1083

Melbourne, Australia. Since 1993, he has been with the Hong Kong University 1084
of Science and Technology (HKUST), Kowloon, Hong Kong, where he is 1085
currently the Dean of Engineering. He is also a Chair Professor of electronic 1086
and computer engineering as well as the Director of the Hong Kong Telecom 1087
Institute of Information Technology and the Wireless Integrated Circuit System 1088
Design Center. He has served as a consultant to different organizations. His 1089
current research interests include wireless and mobile networks, broadband 1090
wireless access, orthogonal frequency-division multiplexing, cooperative 1091
networks, cognitive radio, multiple-input–multiple-output, and beyond third- 1092
generation systems. In these areas, he has over 400 journal and conference 1093
papers and has given invited keynote talks as well as courses all over the world. 1094
He has also three granted patents and ten pending U.S. patents. 1095

Dr. Letaief is the founding Editor-in-Chief of the IEEE TRANSACTIONS ON 1096
WIRELESS COMMUNICATIONS. He has served on the editorial boards of other 1097
prestigious journals, including the IEEE JOURNAL ON SELECTED AREAS 1098
IN COMMUNICATIONS—Wireless Series (as Editor-in-Chief). He has been 1099
involved in organizing a number of major international conferences and events. 1100
These include serving as a Co-Technical Program Chair of the 2004 IEEE 1101
International Conference on Communications, Circuits, and Systems, a General 1102
Cochair of the 2007 IEEE Wireless Communications and Networking Confer- 1103
ence, a Technical Program Cochair of the 2008 IEEE International Conference 1104
on Communication, and the Vice General Chair of the 2010 IEEE International 1105
Conference on Communication. He served as an elected member of the IEEE 1106
Communications Society Board of Governors and as an IEEE Distinguished 1107
Lecturer. He also served as the Chair of the IEEE Communications Society 1108
Technical Committee on Wireless Communications, Chair of the Steering 1109
Committee of the IEEE TRANSACTIONS ON WIRELESS COMMUNICATIONS, 1110
and Chair of the 2008 IEEE Technical Activities/Member and Geographic Ac- 1111
tivities Visits Program. He is a member of the IEEE Communications Society 1112
and the IEEE Vehicular Technology Society Fellow Evaluation Committees, as 1113
well as a member of the IEEE Technical Activities Board/Publications Services 1114
and Products Board Products and Services Committee. He is the recipient of 1115
many distinguished awards, including the Michael G. Gale Medal for Distin- 1116
guished Teaching (highest university-wide teaching award at HKUST), the 1117
2007 IEEE Communications Society Publications Exemplary Award, and eight 1118
Best Paper Awards, with the latest being the prestigious 2009 IEEE Marconi 1119
Prize Paper Award in Wireless Communications. He is currently serving as the 1120
Vice President for Conferences of the IEEE Communications Society. 1121



Tarik Taleb (S'04–M'05) received the B.E. degree 1010
(with distinction) in information engineering and 1011
the M.Sc. and Ph.D. degrees in information sciences 1012
from Tohoku University, Sendai, Japan, in 2001, 1013
2003, and 2005, respectively. 1014

He is currently a Senior Researcher with NEC 1015
Europe Ltd., Heidelberg, Germany. Prior to his 1016
current position and until March 2009, he was 1017
an Assistant Professor with the Graduate School 1018
of Information Sciences, Tohoku University. From 1019
October 2005 until March 2006, he was a Research 1020

Fellow with the Intelligent Cosmos Research Institute, Sendai. He is on the 1021
editorial board of a number of Wiley journals. His research interests include 1022
architectural enhancements to third-generation partnership project networks 1023
(i.e., LTE), mobile multimedia streaming, wireless networking, intervehicular 1024
communications, satellite and space communications, congestion control pro- 1025
tocols, network management, handoff and mobility management, and network 1026
security. His recent research has also focused on on-demand media transmission 1027
in multicast environments. 1028

Dr. Taleb is on the editorial board of the IEEE TRANSACTIONS ON 1029
VEHICULAR TECHNOLOGY and the IEEE Communications Surveys and 1030
Tutorials. He also serves as Vice Chair of the Satellite and Space Communi- 1031
cations Technical Committee of the IEEE Communications Society (ComSoc) 1032
(2006–present). He has been on the Technical Program Committee of several 1033
IEEE conferences, including Globecom, the IEEE International Conference 1034
on Communications, and the IEEE Wireless Communications and Networking 1035
Conference and has chaired some of their symposia. He received the 2009 IEEE 1036
ComSoc Asia-Pacific Young Researcher Award, the 2008 TELECOM System 1037
Technology Award from the Telecommunications Advancement Foundation, 1038
the 2007 Funai Foundation Science Promotion Award, the 2006 IEEE Com- 1039
puter Society Japan Chapter Young Author Award, the 2005 Niwa Yasujirou 1040
Memorial Award, and the 2003 Young Researcher's Encouragement Award 1041
from the Japan chapter of the IEEE Vehicular Technology Society. 1042

AUTHOR QUERIES

AUTHOR PLEASE ANSWER ALL QUERIES

AQ1 = Which section are you exactly referring to here?

AQ2 = What does CA stand for? Please write it out in full.

AQ3 = What does ANR stand for?

NOTE: "IEEE Commun. Magazine, Vol. 44, No. 1, pp. 535-547, Jan. 2006" was deleted in Ref. [23]. Please check if OK.

END OF ALL QUERIES